

QUARTERLY STATEMENT

OF THE

**PROASSURANCE NATIONAL CAPITAL
INSURANCE COMPANY**

FORMERLY

(NCRIC, INC.)

of

WASHINGTON

IN THE

DISTRICT OF COLUMBIA

TO THE

INSURANCE DEPARTMENT

OF THE

DISTRICT OF COLUMBIA

FOR THE PERIOD ENDED
MARCH 31, 2009

PROPERTY AND CASUALTY

2009



QUARTERLY STATEMENT

As of March 31, 2009
of the Condition and Affairs of the

PROASSURANCE NATIONAL CAPITAL INSURANCE COMPANY (f/k/a NCRIC, Inc.)

NAIC Group Code.....2698, 2698 (Current Period) (Prior Period)	NAIC Company Code..... 41149	Employer's ID Number..... 52-1194407
Organized under the Laws of DISTRICT OF COLUMBIA	State of Domicile or Port of Entry DISTRICT OF COLUMBIA	Country of Domicile US
Incorporated/Organized..... June 24, 1980	Commenced Business..... October 1, 1980	
Statutory Home Office	1115 30TH STREET, NW..... WASHINGTON DC 20007 <i>(Street and Number) (City or Town, State and Zip Code)</i>	
Main Administrative Office	1115 30TH STREET, NW..... WASHINGTON DC 20007 <i>(Street and Number) (City or Town, State and Zip Code)</i>	202-969-1866 <i>(Area Code) (Telephone Number)</i>
Mail Address	1115 30TH STREET, NW..... WASHINGTON DC 20007 <i>(Street and Number or P. O. Box) (City or Town, State and Zip Code)</i>	
Primary Location of Books and Records	100 BROOKWOOD PLACE..... BIRMINGHAM AL 35209 <i>(Street and Number) (City or Town, State and Zip Code)</i>	205-877-4400 <i>(Area Code) (Telephone Number)</i>
Internet Web Site Address	www.proassurance.com	
Statutory Statement Contact	NOELLE L. MILBY <i>(Name)</i> nmilby@proassurance.com <i>(E-Mail Address)</i>	205-802-4735 <i>(Area Code) (Telephone Number) (Extension)</i> 205-868-6367 <i>(Fax Number)</i>

OFFICERS

Name	Title	Name	Title
1. HOWARD HARLEY FRIEDMAN	PRESIDENT	2. KATHRYN ANNE NEVILLE	SECRETARY
3. EDWARD LEWIS RAND, JR.	TREASURER	4. WILLIAM STANCIL STARNES	CHAIRMAN

OTHER

VICTOR THOMAS ADAMO	VICE CHAIRMAN	JEFFREY LYNN BOWLBY	VICE PRESIDENT
HOWARD HARLEY FRIEDMAN	CHIEF UNDERWRITING OFFICER	FRANK BERRY O'NEIL	VICE PRESIDENT
EDWARD LEWIS RAND, JR.	VICE PRESIDENT	DARRYL KEITH THOMAS	CHIEF CLAIMS OFFICER
HAYES VANCE WHITESIDE	VICE PRESIDENT		

DIRECTORS OR TRUSTEES

VICTOR THOMAS ADAMO	HOWARD HARLEY FRIEDMAN	EDWARD LEWIS RAND, JR.	WILLIAM STANCIL STARNES
DARRYL KEITH THOMAS			

State of..... ALABAMA
County of..... JEFFERSON

The officers of this reporting entity being duly sworn, each depose and say that they are the described officers of said reporting entity, and that on the reporting period stated above, all of the herein described assets were the absolute property of the said reporting entity, free and clear from any liens or claims thereon, except as herein stated, and that this statement, together with related exhibits, schedules and explanations therein contained, annexed or referred to, is a full and true statement of all the assets and liabilities and of the condition and affairs of the said reporting entity as of the reporting period stated above, and of its income and deductions there from for the period ended, and have been completed in accordance with the NAIC *Annual Statement Instructions and Accounting Practices and Procedures* manual except to the extent that: (1) state law may differ; or, (2) that state rules or regulations require differences in reporting not related to accounting practices and procedures, according to the best of their information, knowledge and belief, respectively. Furthermore, the scope of this attestation by the described officers also includes the related corresponding electronic filing with the NAIC, when required, that is an exact copy (except for formatting differences due to electronic filing) of the enclosed statement. The electronic filing may be requested by various regulators in lieu of or in addition to the enclosed statement.

_____ (Signature) HOWARD HARLEY FRIEDMAN 1. (Printed Name) PRESIDENT (Title)	_____ (Signature) KATHRYN ANNE NEVILLE 2. (Printed Name) SECRETARY (Title)	_____ (Signature) EDWARD LEWIS RAND, JR. 3. (Printed Name) TREASURER (Title)
---	---	---

Subscribed and sworn to before me This _____ day of _____	a. Is this an original filing? Yes [X] No []
	b. If no: 1. State the amendment number _____
	2. Date filed _____
	3. Number of pages attached _____

ASSETS

	Current Statement Date			4 December 31 Prior Year Net Admitted Assets
	1 Assets	2 Nonadmitted Assets	3 Net Admitted Assets (Cols. 1 - 2)	
1. Bonds.....	182,563,949		182,563,949	178,757,891
2. Stocks:				
2.1 Preferred stocks.....			0	
2.2 Common stocks.....	1,818,645		1,818,645	
3. Mortgage loans on real estate:				
3.1 First liens.....			0	
3.2 Other than first liens.....			0	
4. Real estate:				
4.1 Properties occupied by the company (less \$.....0 encumbrances).....			0	
4.2 Properties held for the production of income (less \$.....0 encumbrances).....			0	
4.3 Properties held for sale (less \$.....0 encumbrances).....			0	
5. Cash (\$.....(53,115)), cash equivalents (\$.....0) and short-term investments (\$.....57,920,622).....	57,867,508		57,867,508	74,971,814
6. Contract loans (including \$.....0 premium notes).....			0	
7. Other invested assets.....	492,200		492,200	475,900
8. Receivables for securities.....			0	
9. Aggregate write-ins for invested assets.....	0	0	0	0
10. Subtotals, cash and invested assets (Lines 1 to 9).....	242,742,302	0	242,742,302	254,205,605
11. Title plants less \$.....0 charged off (for Title insurers only).....			0	
12. Investment income due and accrued.....	2,001,801		2,001,801	2,333,838
13. Premiums and considerations:				
13.1 Uncollected premiums and agents' balances in the course of collection.....	347,325	76,406	270,919	98,547
13.2 Deferred premiums, agents' balances and installments booked but deferred and not yet due (including \$.....0 earned but unbilled premiums).....	1,875,818		1,875,818	1,006,248
13.3 Accrued retrospective premiums.....			0	
14. Reinsurance:				
14.1 Amounts recoverable from reinsurers.....	1,042,001		1,042,001	180,222
14.2 Funds held by or deposited with reinsured companies.....			0	
14.3 Other amounts receivable under reinsurance contracts.....	(2,994)		(2,994)	9,092
15. Amounts receivable relating to uninsured plans.....			0	
16.1 Current federal and foreign income tax recoverable and interest thereon.....	273,291		273,291	
16.2 Net deferred tax asset.....	14,009,416	4,551,063	9,458,353	9,007,229
17. Guaranty funds receivable or on deposit.....			0	
18. Electronic data processing equipment and software.....	59,384	707	58,677	65,415
19. Furniture and equipment, including health care delivery assets (\$.....0).....	67,200	67,200	0	
20. Net adjustment in assets and liabilities due to foreign exchange rates.....			0	
21. Receivables from parent, subsidiaries and affiliates.....	416,378		416,378	115,659
22. Health care (\$.....0) and other amounts receivable.....			0	
23. Aggregate write-ins for other than invested assets.....	429,624	356,561	73,063	73,062
24. Total assets excluding Separate Accounts, Segregated Accounts and Protected Cell Accounts (Lines 10 through 23).....	263,261,546	5,051,937	258,209,609	267,094,917
25. From Separate Accounts, Segregated Accounts and Protected Cell Accounts.....			0	
26. Total (Lines 24 and 25).....	263,261,546	5,051,937	258,209,609	267,094,917

DETAILS OF WRITE-INS

0901.....			0	
0902.....			0	
0903.....			0	
0998. Summary of remaining write-ins for Line 9 from overflow page.....	0	0	0	0
0999. Totals (Lines 0901 thru 0903 plus 0998) (Line 9 above).....	0	0	0	0
2301. Prepaid expenses.....	42,515	42,515	0	
2302. Other assets.....	6,394	6,394	0	
2303. State Premium Tax Recoverable.....	73,063		73,063	73,062
2398. Summary of remaining write-ins for Line 23 from overflow page.....	307,652	307,652	0	0
2399. Totals (Lines 2301 thru 2303 plus 2398) (Line 23 above).....	429,624	356,561	73,063	73,062

LIABILITIES, SURPLUS AND OTHER FUNDS

	1 Current Statement Date	2 December 31 Prior Year
1. Losses (current accident year \$....1,289,743).....	90,957,548	93,801,765
2. Reinsurance payable on paid losses and loss adjustment expenses.....		
3. Loss adjustment expenses.....	41,144,014	41,823,270
4. Commissions payable, contingent commissions and other similar charges.....	138,175	107,936
5. Other expenses (excluding taxes, licenses and fees).....	290,595	452,595
6. Taxes, licenses and fees (excluding federal and foreign income taxes).....	165,585	154,220
7.1 Current federal and foreign income taxes (including \$.....0 on realized capital gains (losses)).....		1,602,098
7.2 Net deferred tax liability.....		
8. Borrowed money \$.....0 and interest thereon \$.....0.....		
9. Unearned premiums (after deducting unearned premiums for ceded reinsurance of \$....542,516 and including warranty reserves of \$.....0).....	17,195,114	11,944,482
10. Advance premium.....	108,491	1,399,399
11. Dividends declared and unpaid:		
11.1 Stockholders.....		
11.2 Policyholders.....		
12. Ceded reinsurance premiums payable (net of ceding commissions).....	2,538,582	2,387,018
13. Funds held by company under reinsurance treaties.....		
14. Amounts withheld or retained by company for account of others.....	5,645	13,371
15. Remittances and items not allocated.....		
16. Provision for reinsurance.....	44,600	44,600
17. Net adjustments in assets and liabilities due to foreign exchange rates.....		
18. Drafts outstanding.....		
19. Payable to parent, subsidiaries and affiliates.....	106,070	294,816
20. Payable for securities.....		
21. Liability for amounts held under uninsured plans.....		
22. Capital notes \$.....0 and interest thereon \$.....0.....		
23. Aggregate write-ins for liabilities.....	19,500,000	19,500,000
24. Total liabilities excluding protected cell liabilities (Lines 1 through 23).....	172,194,419	173,525,570
25. Protected cell liabilities.....		
26. Total liabilities (Lines 24 and 25).....	172,194,419	173,525,570
27. Aggregate write-ins for special surplus funds.....	0	0
28. Common capital stock.....	1,000,000	1,000,000
29. Preferred capital stock.....		
30. Aggregate write-ins for other than special surplus funds.....	0	0
31. Surplus notes.....		
32. Gross paid in and contributed surplus.....	50,434,666	50,434,666
33. Unassigned funds (surplus).....	34,580,524	42,134,681
34. Less treasury stock, at cost:		
34.10.000 shares common (value included in Line 28 \$.....0).....		
34.20.000 shares preferred (value included in Line 29 \$.....0).....		
35. Surplus as regards policyholders (Lines 27 to 33, less 34).....	86,015,190	93,569,347
36. Totals.....	258,209,609	267,094,917

DETAILS OF WRITE-INS

2301. Litigation liability.....	19,500,000	19,500,000
2302.		
2303.		
2398. Summary of remaining write-ins for Line 23 from overflow page.....	0	0
2399. Totals (Lines 2301 thru 2303 plus 2398) (Line 23 above).....	19,500,000	19,500,000
2701.		
2702.		
2703.		
2798. Summary of remaining write-ins for Line 27 from overflow page.....	0	0
2799. Totals (Lines 2701 thru 2703 plus 2798) (Line 27 above).....	0	0
3001.		
3002.		
3003.		
3098. Summary of remaining write-ins for Line 30 from overflow page.....	0	0
3099. Totals (Lines 3001 thru 3003 plus 3098) (Line 30 above).....	0	0

STATEMENT OF INCOME

	1 Current Year to Date	2 Prior Year to Date	3 Prior Year Ended December 31
UNDERWRITING INCOME			
1. Premiums earned:			
1.1 Direct..... (written \$.....9,458,953).....	3,938,358	4,569,398	17,125,045
1.2 Assumed..... (written \$.....0).....			
1.3 Ceded..... (written \$.....605,482).....	335,518	389,364	1,424,938
1.4 Net..... (written \$.....8,853,471).....	3,602,840	4,180,034	15,700,107
DEDUCTIONS:			
2. Losses incurred (current accident year \$.....1,289,742):			
2.1 Direct.....	1,521,723	1,784,547	4,364,771
2.2 Assumed.....			
2.3 Ceded.....	231,981	254,862	5,433,651
2.4 Net.....	1,289,742	1,529,685	(1,068,880)
3. Loss adjustment expenses incurred.....	1,732,249	2,030,393	4,621,329
4. Other underwriting expenses incurred.....	1,245,270	1,128,663	3,253,722
5. Aggregate write-ins for underwriting deductions.....	0	0	0
6. Total underwriting deductions (Lines 2 through 5).....	4,267,261	4,688,741	6,806,171
7. Net income of protected cells.....			
8. Net underwriting gain (loss) (Line 1 minus Line 6 + Line 7).....	(664,421)	(508,707)	8,893,936
INVESTMENT INCOME			
9. Net investment income earned.....	2,052,076	2,416,785	9,806,984
10. Net realized capital gains (losses) less capital gains tax of \$.....(65,872).....	(733,734)	(326)	811,457
11. Net investment gain (loss) (Lines 9 + 10).....	1,318,342	2,416,459	10,618,441
OTHER INCOME			
12. Net gain or (loss) from agents' or premium balances charged off (amount recovered \$.....0 amount charged off \$.....18,930).....	(18,930)	(4,728)	(20,273)
13. Finance and service charges not included in premiums.....	217	1,484	4,967
14. Aggregate write-ins for miscellaneous income.....	26,040	31,180	91,543
15. Total other income (Lines 12 through 14).....	7,327	27,936	76,237
16. Net income before dividends to policyholders, after capital gains tax and before all other federal and foreign income taxes (Lines 8 + 11 + 15).....	661,248	1,935,688	19,588,614
17. Dividends to policyholders.....			
18. Net income after dividends to policyholders, after capital gains tax and before all other federal and foreign income taxes (Line 16 minus Line 17).....	661,248	1,935,688	19,588,614
19. Federal and foreign income taxes incurred.....	805,000	392,998	5,239,135
20. Net income (Line 18 minus Line 19) (to Line 22).....	(143,752)	1,542,690	14,349,479
CAPITAL AND SURPLUS ACCOUNT			
21. Surplus as regards policyholders, December 31 prior year.....	93,569,346	69,208,489	69,208,489
22. Net income (from Line 20).....	(143,752)	1,542,690	14,349,479
23. Net transfers (to) from Protected Cell accounts.....			
24. Change in net unrealized capital gains or (losses) less capital gains tax of \$.....0.....	226,044	(23,038)	(515,430)
25. Change in net unrealized foreign exchange capital gain (loss).....			
26. Change in net deferred income tax.....	353,314	84,799	381,024
27. Change in nonadmitted assets.....	1,010,238	173,353	5,421,783
28. Change in provision for reinsurance.....			4,724,000
29. Change in surplus notes.....			
30. Surplus (contributed to) withdrawn from protected cells.....			
31. Cumulative effect of changes in accounting principles.....			
32. Capital changes:			
32.1 Paid in.....			
32.2 Transferred from surplus (Stock Dividend).....			
32.3 Transferred to surplus.....			
33. Surplus adjustments:			
33.1 Paid in.....			
33.2 Transferred to capital (Stock Dividend).....			
33.3 Transferred from capital.....			
34. Net remittances from or (to) Home Office.....			
35. Dividends to stockholders.....	(9,000,000)		
36. Change in treasury stock.....			
37. Aggregate write-ins for gains and losses in surplus.....	0	0	0
38. Change in surplus as regards policyholders (Lines 22 through 37).....	(7,554,156)	1,777,804	24,360,856
39. Surplus as regards policyholders, as of statement date (Lines 21 plus 38).....	86,015,190	70,986,293	93,569,346
DETAILS OF WRITE-INS			
0501.			
0502.			
0503.			
0598. Summary of remaining write-ins for Line 5 from overflow page.....	0	0	0
0599. Totals (Lines 0501 thru 0503 plus 0598) (Line 5 above).....	0	0	0
1401. Miscellaneous income.....	26,040	31,180	100,957
1402. Gain/Loss on Sale of Equipment.....			(9,414)
1403.			
1498. Summary of remaining write-ins for Line 14 from overflow page.....	0	0	0
1499. Totals (Lines 1401 thru 1403 plus 1498) (Line 14 above).....	26,040	31,180	91,543
3701.			
3702.			
3703.			
3798. Summary of remaining write-ins for Line 37 from overflow page.....	0	0	0
3799. Totals (Lines 3701 thru 3703 plus 3798) (Line 37 above).....	0	0	0

CASH FLOW

	1 Current Year to Date	2 Prior Year Ended December 31
CASH FROM OPERATIONS		
1. Premiums collected net of reinsurance.....	6,910,121	16,180,929
2. Net investment income.....	2,688,711	11,425,239
3. Miscellaneous income.....	7,327	76,237
4. Total (Lines 1 through 3).....	9,606,159	27,682,405
5. Benefit and loss related payments.....	7,395,157	(6,831,196)
6. Net transfers to Separate Accounts, Segregated Accounts and Protected Cell Accounts.....		
7. Commissions, expenses paid and aggregate write-ins for deductions.....	1,365,666	3,170,429
8. Dividends paid to policyholders.....		
9. Federal and foreign income taxes paid (recovered) net of \$.....0 tax on capital gains (losses).....	2,614,517	6,322,081
10. Total (Lines 5 through 9).....	11,375,340	2,661,314
11. Net cash from operations (Line 4 minus Line 10).....	(1,769,181)	25,021,091
CASH FROM INVESTMENTS		
12. Proceeds from investments sold, matured or repaid:		
12.1 Bonds.....	5,515,477	75,238,242
12.2 Stocks.....		
12.3 Mortgage loans.....		
12.4 Real estate.....		
12.5 Other invested assets.....		4,300
12.6 Net gains or (losses) on cash, cash equivalents and short-term investments.....	(312,000)	(102,000)
12.7 Miscellaneous proceeds.....		
12.8 Total investment proceeds (Lines 12.1 to 12.7).....	5,203,477	75,140,542
13. Cost of investments acquired (long-term only):		
13.1 Bonds.....	9,959,353	36,324,366
13.2 Stocks.....	1,746,984	
13.3 Mortgage loans.....		
13.4 Real estate.....		
13.5 Other invested assets.....	16,300	500
13.6 Miscellaneous applications.....		
13.7 Total investments acquired (Lines 13.1 to 13.6).....	11,722,637	36,324,866
14. Net increase (decrease) in contract loans and premium notes.....		
15. Net cash from investments (Line 12.8 minus Line 13.7 and Line 14).....	(6,519,160)	38,815,676
CASH FROM FINANCING AND MISCELLANEOUS SOURCES		
16. Cash provided (applied):		
16.1 Surplus notes, capital notes.....		
16.2 Capital and paid in surplus, less treasury stock.....		
16.3 Borrowed funds.....		
16.4 Net deposits on deposit-type contracts and other insurance liabilities.....		
16.5 Dividends to stockholders.....	9,000,000	
16.6 Other cash provided (applied).....	184,035	46,996
17. Net cash from financing and miscellaneous sources (Lines 16.1 through 16.4 minus Line 16.5 plus Line 16.6).....	(8,815,965)	46,996
RECONCILIATION OF CASH, CASH EQUIVALENTS AND SHORT-TERM INVESTMENTS		
18. Net change in cash, cash equivalents and short-term investments (Line 11 plus Line 15 plus Line 17).....	(17,104,306)	63,883,763
19. Cash, cash equivalents and short-term investments:		
19.1 Beginning of year.....	74,971,813	11,088,050
19.2 End of period (Line 18 plus Line 19.1).....	57,867,507	74,971,813

Note: Supplemental disclosures of cash flow information for non-cash transactions:

20.0001		
---------------	--	--

NOTES TO FINANCIAL STATEMENTS

Note 1 - Summary of Significant Accounting Policies

No significant change.

Note 2 - Accounting Changes and Corrections of Errors

No significant change.

Note 3 - Business Combinations and Goodwill

No significant change.

Note 4 - Discontinued Operations

No significant change.

Note 5 - Investments

No significant change.

Note 6 - Joint Ventures, Partnerships and Limited Liability Companies

No significant change.

Note 7 - Investment Income

No significant change.

Note 8 - Derivative Instruments

No significant change.

Note 9 - Income Taxes

No significant change.

Note 10 - Information Concerning Parent, Subsidiaries, Affiliates and Other Related Parties

On March 12, 2009 the Company purchased shares (valued at \$1,746,984) of its ultimate parent, ProAssurance Corporation, whose shares are publicly traded. The statement value of the investment is equal to the fair value of the shares reduced by \$71,662 for the reciprocal ownership calculation required by the NAIC Securities Valuation Office. As of March 31, 2009, the book/adjusted carrying value was \$1,818,645.

Effective January 2, 2009, the Company and its affiliates amended its Tax Allocation Agreement, Management Services Agreement and Expense Allocation Agreement to add new affiliate Mid-Continent General Agency, Inc.

Note 11 - Debt

No significant change.

Note 12 - Retirement Plans, Deferred Compensation, Postemployment Benefits and Compensated Absences and Other Postretirement Benefit Plans

No significant change.

Note 13 - Capital and Surplus, Dividend Restrictions and Quasi-Reorganizations

The Company declared a \$9.0 million ordinary cash dividend payable to NCRIC Corporation (the Company's parent) on March 2, 2009. The dividend was paid in cash on March 13, 2009.

Note 14 - Contingencies

A judgment was entered on February 20, 2004 against the Company by a District of Columbia Superior Court in favor of Columbia Hospital for Women Medical Center, Inc. (CHW) in the amount of \$18.2 million (the judgment), which was

NOTES TO FINANCIAL STATEMENTS

appealed. In October 2008 the judgment was affirmed by the District of Columbia Court of Appeals. The Company filed a petition for rehearing with the Court of Appeals and that petition was denied on January 6, 2009. On January 6, 2009, the liquidating trustee for CHW filed a voluntary petition for bankruptcy protection. On April 28, 2009, the Company remitted payment in the amount of \$20,841,638.89, which reflects the judgment plus interest, to CHW's bankruptcy trustee. NCRIC Corporation has indemnified the Company for up to \$5.5 million of the final judgment from this litigation. Accordingly, NCRIC Corporation remitted \$5.5 million to PRA National on May 11, 2009. This accrual is made in accordance with SSAP 5.

The Company realized losses of \$312,000 related to its \$5,000,000 interest in the Reserve Primary Fund, a money market mutual fund, which was redeemed in September 2008. As of April 30, 2009, the Company has received \$4,503,169 and \$414,000 has been impaired. The remaining balance has been nonadmitted since December 31, 2008.

Note 15 - Leases

No significant change.

Note 16 - Information About Financial Instruments With Off-Balance Sheet Risk and Financial Instruments With Concentrations of Credit Risk

No significant change.

Note 17 - Sale, Transfer and Servicing of Financial Assets and Extinguishments of Liabilities

No significant change.

- C. The Company has recognized no wash sales in 2009.

Note 18 - Gain or Loss to the Reporting Entity from Uninsured Plans and the Uninsured Portion of Partially Insured Plans

No significant change.

Note 19 - Direct Premium Written/Produced by Managing General Agents/Third Party Administrators

No significant change.

Note 20 - Other Items

- H. Subprime Exposure

(1) The Company defines subprime by the description of the underlying assets as provided by Bloomberg data, using a combination of: higher than average interest rates on underlying loans, credit scores, and high loan-to-value ratios.

(2) Direct exposure through subprime mortgage Loans:

None

(3) Direct Exposure through other Investments:

Type	Book Adjusted Actual Cost	(000's)		
		Carrying Value	Fair Value	Other than Temporary Impairments
RMBS	\$962,378	\$962,378	\$928,913	\$149,000

(4) Underwriting Exposure to subprime mortgage risk through Mortgage Guaranty and Financial Guaranty insurance coverage:

None

Note 21 - Events Subsequent

See Note 14.

Effective May 1, 2009, American Captive Corporation (ACC) was merged into the Company. ACC was an inactive subsidiary.

Effective April 1, 2009, the Company and its affiliates amended its Tax Allocation Agreement and effective May 1, 2009 its Expense Allocation and Management Services Agreements to include Podiatry Insurance Company of America and its subsidiaries.

NOTES TO FINANCIAL STATEMENTS

Note 22 - Reinsurance

No significant change.

Note 23 - Retrospectively Rated Contracts & Contracts Subject to Redetermination

No significant change.

Note 24 - Change in Incurred Losses and Loss Adjustment Expenses

No significant change.

Note 25 - Intercompany Pooling Arrangements

No significant change.

Note 26 - Structured Settlements

No significant change.

Note 27 - Health Care Receivables

No significant change.

Note 28 - Participating Policies

No significant change.

Note 29 - Premium Deficiency Reserves

No significant change.

Note 30 - High Deductibles

No significant change.

Note 31 - Discounting of Liabilities for Unpaid Losses or Unpaid Loss Adjustment Expenses

No significant change.

Note 32 - Asbestos/Environmental Reserves

No significant change.

Note 33 - Subscriber Savings Accounts

No significant change.

Note 34 - Multiple Peril Crop Insurance

No significant change.

GENERAL INTERROGATORIES

(Responses to these interrogatories should be based on changes that have occurred since prior year end unless otherwise noted)

PART 1 - COMMON INTERROGATORIES

GENERAL

- 1.1 Did the reporting entity experience any material transactions requiring the filing of Disclosure of Material Transactions with the State of Domicile, as required by the Model Act? Yes No
- 1.2 If yes, has the report been filed with the domiciliary state? Yes No
- 2.1 Has any change been made during the year of this statement in the charter, by-laws, articles of incorporation, or deed of settlement of the reporting entity? Yes No
- 2.2 If yes, date of change:
3. Have there been any substantial changes in the organizational chart since the prior quarter end? Yes No
If yes, complete the Schedule Y-Part 1 - Organizational chart.
- 4.1 Has the reporting entity been a party to a merger or consolidation during the period covered by this statement? Yes No
- 4.2 If yes, provide name of entity, NAIC Company Code, and state of domicile (use two letter state abbreviation) for any entity that has ceased to exist as a result of the merger or consolidation.

1 Name of Entity	2 NAIC Company Code	3 State of Domicile

5. If the reporting entity is subject to a management agreement, including third-party administrator(s), managing general agent(s), attorney-in-fact, or similar agreement, have there been any significant changes regarding the terms of the agreement or principals involved? Yes No N/A
If yes, attach an explanation.

EXPENSE ALLOCATION, MANAGEMENT SERVICES AGREEMENT AND TAX ALLOCATION AGREEMENT WERE ALL AMENDED TO INCLUDE MID-CONTINENT GENERAL AGENCY, INC., A NEW AFFILIATE ADDED JANUARY 02, 2009.

- 6.1 State as of what date the latest financial examination of the reporting entity was made or is being made. 12/31/2006.....
- 6.2 State the as of date that the latest financial examination report became available from either the state of domicile or the reporting entity. This date should be the date of the examined balance sheet and not the date the report was completed or released. 12/31/2006.....
- 6.3 State as of what date the latest financial examination report became available to other states or the public from either the state of domicile or the reporting entity. This is the release date or completion date of the examination report and not the date of the examination (balance sheet date). 2/14/2008.....
- 6.4 By what department or departments?
DISTRICT OF COLUMBIA DEPARTMENT OF INSURANCE, SECURITIES AND BANKING

- 6.5 Have all financial statement adjustments within the latest financial examination report been accounted for in a subsequent financial statement filed with Departments? Yes No N/A
- 6.6 Have all of the recommendations within the latest financial examination report been complied with? Yes No N/A
- 7.1 Has this reporting entity had any Certificates of Authority, licenses or registrations (including corporate registration, if applicable) suspended or revoked by any governmental entity during the reporting period? Yes No
- 7.2 If yes, give full information:

- 8.1 Is the company a subsidiary of a bank holding company regulated by the Federal Reserve Board? Yes No
- 8.2 If response to 8.1 is yes, please identify the name of the bank holding company.

- 8.3 Is the company affiliated with one or more banks, thrifts or securities firms? Yes No

- 8.4 If the response to 8.3 is yes, please provide below the names and location (city and state of the main office) of any affiliates regulated by a federal regulatory services agency [i.e. the Federal Reserve Board (FRB), the Office of the Comptroller of the Currency (OCC), the Office of Thrift Supervision (OTS), the Federal Deposit Insurance Corporation (FDIC) and the Securities Exchange Commission (SEC)] and identify the affiliate's primary federal regulator].

1 Affiliate Name	2 Location (City, State)	3 FRB	4 OCC	5 OTS	6 FDIC	7 SEC

- 9.1 Are the senior officers (principal executive officer, principal financial officer, principal accounting officer or controller, or persons performing similar functions) of the reporting entity subject to a code of ethics, which includes the following standards? Yes No
- (a) Honest and ethical conduct, including the ethical handling of actual or apparent conflicts of interest between personal and professional relationships;
- (b) Full, fair, accurate, timely and understandable disclosure in the periodic reports required to be filed by the reporting entity;
- (c) Compliance with applicable governmental laws, rules and regulations;
- (d) The prompt internal reporting of violations to an appropriate person or persons identified in the code; and
- (e) Accountability for adherence to the code.

- 9.11 If the response to 9.1 is No, please explain:

- 9.2 Has the code of ethics for senior managers been amended? Yes No

- 9.21 If the response to 9.2 is Yes, provide information related to amendment(s).

- 9.3 Have any provisions of the code of ethics been waived for any of the specified officers? Yes No

GENERAL INTERROGATORIES

(Responses to these interrogatories should be based on changes that have occurred since prior year end unless otherwise noted)

PART 1 - COMMON INTERROGATORIES

9.31 If the response to 9.3 is Yes, provide the nature of any waiver(s).

FINANCIAL

10.1 Does the reporting entity report any amounts due from parent, subsidiaries or affiliates on Page 2 of this statement? Yes No

10.2 If yes, indicate any amounts receivable from parent included in the Page 2 amount: \$.....343,234

INVESTMENT

11.1 Were any of the stocks, bonds, or other assets of the reporting entity loaned, placed under option agreement, or otherwise made available for use by another person? (Exclude securities under securities lending agreements.) Yes No

11.2 If yes, give full and complete information relating thereto:

12. Amount of real estate and mortgages held in other invested assets in Schedule BA: \$.....0

13. Amount of real estate and mortgages held in short-term investments: \$.....0

14.1 Does the reporting entity have any investments in parent, subsidiaries and affiliates? Yes No

14.2 If yes, please complete the following:

	1 Prior Year-End		2 Current Quarter	
	Book/Adjusted Carrying Value		Book/Adjusted Carrying Value	
14.21 Bonds.....	\$.....0	\$.....0	\$.....0	\$.....0
14.22 Preferred Stock.....	\$.....0	\$.....0	\$.....0	\$.....0
14.23 Common Stock.....	\$.....0	\$.....0	\$.....1,818,645	\$.....1,818,645
14.24 Short-Term Investments.....	\$.....0	\$.....0	\$.....0	\$.....0
14.25 Mortgage Loans on Real Estate.....	\$.....0	\$.....0	\$.....0	\$.....0
14.26 All Other.....	\$.....0	\$.....0	\$.....0	\$.....0
14.27 Total Investment in Parent, Subsidiaries and Affiliates (Subtotal Lines 14.21 to 14.26).....	\$.....0	\$.....0	\$.....1,818,645	\$.....1,818,645
14.28 Total Investment in Parent included in Lines 14.21 to 14.26 above.....	\$.....0	\$.....0	\$.....1,818,645	\$.....1,818,645

15.1 Has the reporting entity entered into any hedging transactions reported on Schedule DB? Yes No

15.2 If yes, has a comprehensive description of the hedging program been made available to the domiciliary state? Yes No
If no, attach a description with this statement.

16. Excluding items in Schedule E-Part 3-Special Deposits, real estate, mortgage loans and investments held physically in the reporting entity's offices, vaults or safety deposit boxes, were all stocks, bonds and other securities, owned throughout the current year held pursuant to a custodial agreement with a qualified bank or trust company in accordance with Section 3, III. Conducting Examinations, F-Custodial or Safekeeping Agreements of the NAIC Financial Condition Examiners Handbook? Yes No

16.1 For all agreements that comply with the requirements of the NAIC Financial Condition Examiners Handbook, complete the following:

1 Name of Custodian(s)	2 Custodian Address
US BANK	BIRMINGHAM, AL

16.2 For all agreements that do not comply with the requirements of the NAIC Financial Condition Examiners Handbook, provide the name, location and a complete explanation.

1 Name(s)	2 Location(s)	3 Complete Explanation(s)
N/A		

16.3 Have there been any changes, including name changes, in the custodian(s) identified in 16.1 during the current quarter? Yes No

16.4 If yes, give full and complete information relating thereto:

1 Old Custodian	2 New Custodian	3 Date of Change	4 Reason
N/A			

16.5 Identify all investment advisors, broker/dealers or individuals acting on behalf of broker/dealers that have access to the investment accounts, handle securities and have authority to make investments on behalf of the reporting entity:

1 Central Registration Depository	2 Name(s)	3 Address
113972	STANDISH MELLON ASSET MANAGEMENT	BNY MELLON CENTER, 210 WASH ST, BOSTON, MA 02108

17.1 Have all the filing requirements of the Purposes and Procedures Manual of the NAIC Securities Valuation Office been followed? Yes No

17.2 If no, list exceptions:

**PROASSURANCE NATIONAL CAPITAL INSURANCE COMPANY (NCRIC, Inc.)
GENERAL INTERROGATORIES (continued)**

**PART 2
PROPERTY & CASUALTY INTERROGATORIES**

1. If the reporting entity is a member of a pooling arrangement, did the agreement or the reporting entity's participation change? Yes [] No [] N/A [X]
If yes, attach an explanation.

2. Has the reporting entity reinsured any risk with any other reporting entity and agreed to release such entity from liability, in whole or in part, from any loss that may occur on the risk, or portion thereof, reinsured? Yes [] No [X]
If yes, attach an explanation.

3.1 Have any of the reporting entity's primary reinsurance contracts been canceled? Yes [] No [X]
3.2 If yes, give full and complete information thereto:

4.1 Are any of the liabilities for unpaid losses and loss adjustment expenses other than certain workers' compensation liabilities tabular reserves (see Annual Statement Instructions pertaining to disclosure of discounting for definition of "tabular reserves,") discounted at a rate of interest greater than zero? Yes [] No [X]

4.2 If yes, complete the following schedule:

1 Line of Business	2 Maximum Interest	3 Disc. Rate	Total Discount				Discount Taken During Period				
			4 Unpaid Losses	5 Unpaid LAE	6 IBNR	7 Total	8 Unpaid Losses	9 Unpaid LAE	10 IBNR	11 Total	
						0					0
Total	XXX	XXX	0	0	0	0	0	0	0	0	0

SCHEDULE F - CEDED REINSURANCE

Showing All New Reinsurers - Current Year to Date

1 NAIC Company Code	2 Federal ID Number	3 Name of Reinsurer	4 Location	5 Is Insurer Authorized? (YES or NO)
------------------------------	------------------------------	------------------------	---------------	---

NONE

SCHEDULE T - EXHIBIT OF PREMIUMS WRITTEN

Current Year to Date - Allocated by States and Territories

States, Etc.	1 Active Status	Direct Premiums Written		Direct Losses Paid (Deducting Salvage)		Direct Losses Unpaid	
		2 Current Year to Date	3 Prior Year to Date	4 Current Year to Date	5 Prior Year to Date	6 Current Year to Date	7 Prior Year to Date
1. Alabama.....AL	N						
2. Alaska.....AK	N						
3. Arizona.....AZ	N						
4. Arkansas.....AR	N						
5. California.....CA	N						
6. Colorado.....CO	N						
7. Connecticut.....CT	N						
8. Delaware.....DE	L			150,000	600,000	5,727,166	10,329,152
9. District of Columbia.....DC	L	9,458,953	12,159,084	1,700,000	1,225,000	54,452,192	57,704,252
10. Florida.....FL	N						
11. Georgia.....GA	N						
12. Hawaii.....HI	N						
13. Idaho.....ID	N						
14. Illinois.....IL	N						
15. Indiana.....IN	N						
16. Iowa.....IA	N						
17. Kansas.....KS	N						
18. Kentucky.....KY	N						
19. Louisiana.....LA	N						
20. Maine.....ME	N						
21. Maryland.....MD	L		(62,945)	600,000	50,000	13,011,545	17,596,489
22. Massachusetts.....MA	N						
23. Michigan.....MI	N						
24. Minnesota.....MN	N						
25. Mississippi.....MS	N						
26. Missouri.....MO	N						
27. Montana.....MT	N						
28. Nebraska.....NE	N						
29. Nevada.....NV	N						
30. New Hampshire.....NH	N						
31. New Jersey.....NJ	N						
32. New Mexico.....NM	N						
33. New York.....NY	N						
34. North Carolina.....NC	N						
35. North Dakota.....ND	N						
36. Ohio.....OH	N						
37. Oklahoma.....OK	N						
38. Oregon.....OR	N						
39. Pennsylvania.....PA	N						
40. Rhode Island.....RI	N						
41. South Carolina.....SC	N						
42. South Dakota.....SD	N						
43. Tennessee.....TN	N						
44. Texas.....TX	N						
45. Utah.....UT	N						
46. Vermont.....VT	N						
47. Virginia.....VA	L			2,132,490	2,384,591	20,588,561	25,315,288
48. Washington.....WA	N						
49. West Virginia.....WV	L		(30,099)	269,231	1,047,500	2,764,370	3,465,517
50. Wisconsin.....WI	N						
51. Wyoming.....WY	N						
52. American Samoa.....AS	N						
53. Guam.....GU	N						
54. Puerto Rico.....PR	N						
55. US Virgin Islands.....VI	N						
56. Northern Mariana Islands.....MP	N						
57. Canada.....CN	N						
58. Aggregate Other Alien.....OT	XXX	0	0	0	0	0	0
59. Totals.....	(a).....5	9,458,953	12,066,040	4,851,721	5,307,091	96,543,834	114,410,698

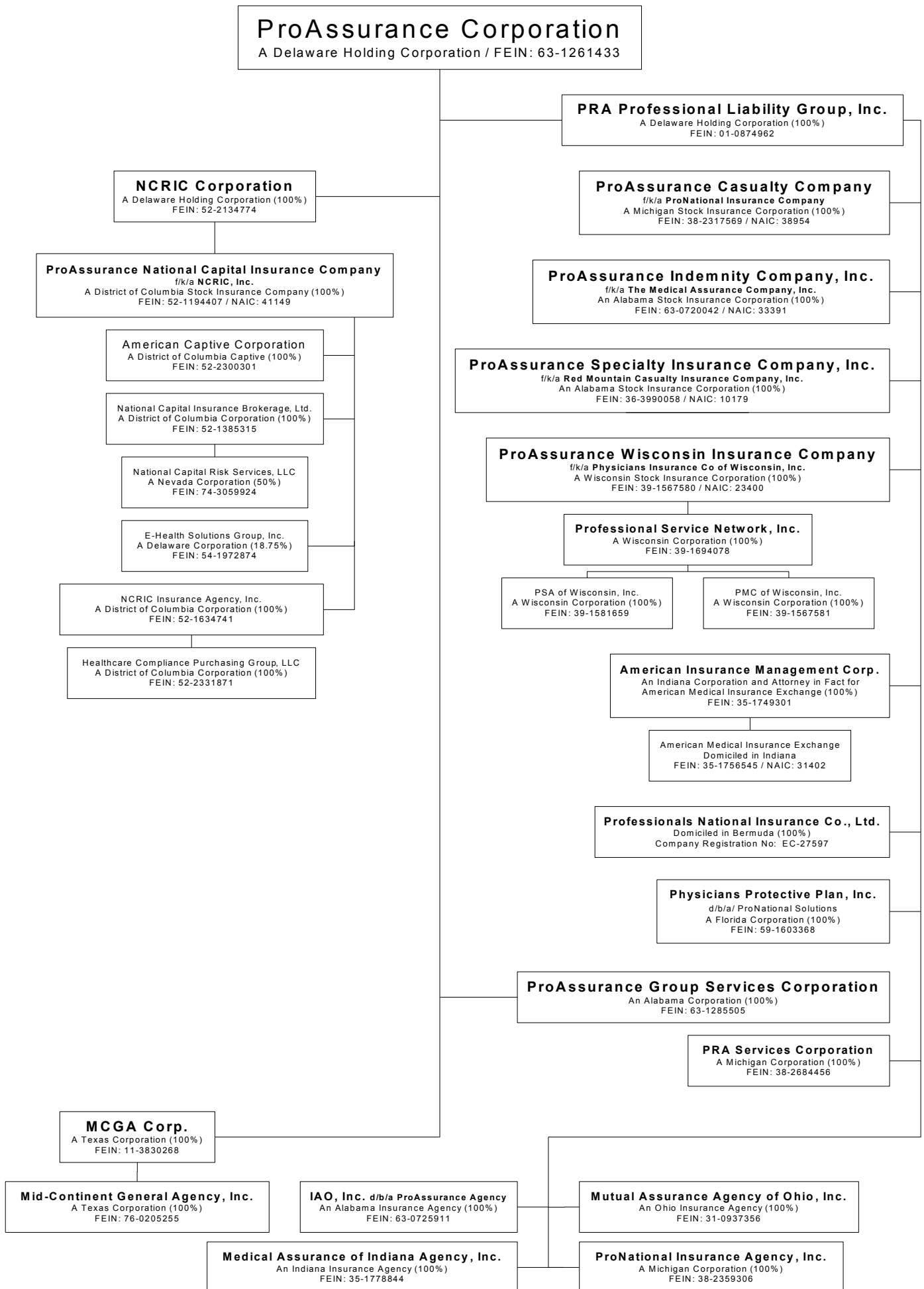
DETAILS OF WRITE-INS

5801.....	XXX						
5802.....	XXX						
5803.....	XXX						
5898. Summary of remaining write-ins for Line 58 from overflow page.....	XXX	0	0	0	0	0	0
5899. Totals (Lines 5801 thru 5803 + Line 5898) (Line 58 above).....	XXX	0	0	0	0	0	0

(a) Insert the number of L responses except for Canada and Other Alien.

**SCHEDULE Y – INFORMATION CONCERNING ACTIVITIES OF INSURER MEMBERS
OF A HOLDING COMPANY GROUP**

PART 1 – ORGANIZATIONAL CHART



PART 1 - LOSS EXPERIENCE

Lines of Business	Current Year to Date			4 Prior Year to Date Direct Loss Percentage
	1 Direct Premiums Earned	2 Direct Losses Incurred	3 Direct Loss Percentage	
1. Fire.....			0.0	
2. Allied lines.....			0.0	
3. Farmowners multiple peril.....			0.0	
4. Homeowners multiple peril.....			0.0	
5. Commercial multiple peril.....			0.0	
6. Mortgage guaranty.....			0.0	
8. Ocean marine.....			0.0	
9. Inland marine.....			0.0	
10. Financial guaranty.....			0.0	
11.1. Medical professional liability - occurrence.....	(62,380)	(40,140)	64.3	66.9
11.2. Medical professional liability - claims made.....	4,000,738	1,561,863	39.0	39.5
12. Earthquake.....			0.0	
13. Group accident and health.....			0.0	
14. Credit accident and health.....			0.0	
15. Other accident and health.....			0.0	
16. Workers' compensation.....			0.0	
17.1 Other liability-occurrence.....			0.0	
17.2 Other liability-claims made.....			0.0	
18.1 Products liability-occurrence.....			0.0	
18.2 Products liability-claims made.....			0.0	
19.1, 19.2 Private passenger auto liability.....			0.0	
19.3, 19.4 Commercial auto liability.....			0.0	
21. Auto physical damage.....			0.0	
22. Aircraft (all perils).....			0.0	
23. Fidelity.....			0.0	
24. Surety.....			0.0	
26. Burglary and theft.....			0.0	
27. Boiler and machinery.....			0.0	
28. Credit.....			0.0	
29. International.....			0.0	
30. Warranty.....			0.0	
31. Reinsurance-nonproportional assumed property.....	XXX	XXX	XXX	XXX
32. Reinsurance-nonproportional assumed liability.....	XXX	XXX	XXX	XXX
33. Reinsurance-nonproportional assumed financial lines.....	XXX	XXX	XXX	XXX
34. Aggregate write-ins for other lines of business.....	0	0	0.0	
35. Totals.....	3,938,358	1,521,723	38.6	39.1
DETAILS OF WRITE-INS				
3401.			0.0	
3402.			0.0	
3403.			0.0	
3498. Sum. of remaining write-ins for Line 34 from overflow page.....	0	0	0.0	XXX
3499. Totals (Lines 3401 thru 3403 plus 3498) (Line 34).....	0	0	0.0	

PART 2 - DIRECT PREMIUMS WRITTEN

Lines of Business	1	2	3
	Current Quarter	Current Year to Date	Prior Year Year to Date
1. Fire.....			
2. Allied lines.....			
3. Farmowners multiple peril.....			
4. Homeowners multiple peril.....			
5. Commercial multiple peril.....			
6. Mortgage guaranty.....			
8. Ocean marine.....			
9. Inland marine.....			
10. Financial guaranty.....			
11.1. Medical professional liability - occurrence.....	(62,380)	(62,380)	(71,398)
11.2. Medical professional liability - claims made.....	9,521,333	9,521,333	12,137,438
12. Earthquake.....			
13. Group accident and health.....			
14. Credit accident and health.....			
15. Other accident and health.....			
16. Workers' compensation.....			
17.1. Other liability-occurrence.....			
17.2. Other liability-claims made.....			
18.1. Products liability-occurrence.....			
18.2. Products liability-claims made.....			
19.1, 19.2 Private passenger auto liability.....			
19.3, 19.4 Commercial auto liability.....			
21. Auto physical damage.....			
22. Aircraft (all perils).....			
23. Fidelity.....			
24. Surety.....			
26. Burglary and theft.....			
27. Boiler and machinery.....			
28. Credit.....			
29. International.....			
30. Warranty.....			
31. Reinsurance-nonproportional assumed property.....	XXX	XXX	XXX
32. Reinsurance-nonproportional assumed liability.....	XXX	XXX	XXX
33. Reinsurance-nonproportional assumed financial lines.....	XXX	XXX	XXX
34. Aggregate write-ins for other lines of business.....	0	0	0
35. Totals.....	9,458,953	9,458,953	12,066,040
DETAILS OF WRITE-INS			
3401.			
3402.			
3403.			
3498. Sum. of remaining write-ins for Line 34 from overflow page.....	0	0	0
3499. Totals (Lines 3401 thru 3403 plus 3498) (Line 34).....	0	0	0

PART 3 (000 omitted)

LOSS AND LOSS ADJUSTMENT EXPENSE RESERVES SCHEDULE

	1	2	3	4	5	6	7	8	9	10	11	12	13
Years in Which Losses Occurred	Prior Year-End Known Case Loss and LAE Reserves	Prior Year-End IBNR Loss and LAE Reserves	Total Prior Year-End Loss and LAE Reserves (Cols. 1 + 2)	2009 Loss and LAE Payments on Claims Reported as of Prior Year-End	2009 Loss and LAE Payments on Claims Unreported as of Prior Year-End	Total 2009 Loss and LAE Payments (Cols. 4 + 5)	Q.S. Date Known Case Loss and LAE Reserves on Claims Reported and Open as of Prior Year-End	Q.S. Date Known Case Loss and LAE Reserves on Claims Reported or Reopened Subsequent to Prior Year-End	Q.S. Date IBNR Loss and LAE Reserves	Total Q.S. Loss and LAE Reserves (Cols. 7 + 8 + 9)	Prior Year-End Known Case Loss and LAE Reserves Developed (Savings)/Deficiency (Cols. 4 + 7 minus Col. 1)	Prior Year-End IBNR Loss and LAE Reserves Developed (Savings)/Deficiency (Cols. 5 + 8 + 9 minus Col. 2)	Prior Year-End Total Loss and LAE Reserve Developed (Savings)/Deficiency (Cols. 11 + 12)
1. 2006 + Prior.....	61,650	42,533	104,183	5,036	202	5,238	41,565		57,380	98,945	(15,049)	15,049	0
2. 2007.....	15,531	2,132	17,663	1,018	45	1,063	2,186		14,414	16,600	(12,327)	12,327	0
3. Subtotals 2007 + Prior.....	77,181	44,665	121,846	6,054	247	6,301	43,751	0	71,794	115,545	(27,376)	27,376	0
4. 2008.....	2,632	11,151	13,783	136	57	193	14,797	15	(1,222)	13,590	12,301	(12,301)	0
5. Subtotals 2008 + Prior.....	79,813	55,816	135,629	6,190	304	6,494	58,548	15	70,572	129,135	(15,075)	15,075	0
6. 2009.....	XXX	XXX	XXX	XXX	51	51	XXX	96	2,871	2,967	XXX	XXX	XXX
7. Totals.....	79,813	55,816	135,629	6,190	355	6,545	58,548	111	73,443	132,102	(15,075)	15,075	0
8. Prior Year-End's Surplus As Regards Policyholders	93,569										Col. 11, Line 7 As % of Col. 1, Line 7	Col. 12, Line 7 As % of Col. 2, Line 7	Col. 13, Line 7 As % of Col. 3, Line 7
											1.(18.9)%	2.27.0 %	3.0.0 %
													Col. 13, Line 7 Line 8
													4.0.0 %

Q13

SUPPLEMENTAL EXHIBITS AND SCHEDULES INTERROGATORIES

The following supplemental reports are required to be filed as part of your statement filing. However, in the event that your company does not transact the type of business for which the special report must be filed, your response of NO to the specific interrogatory will be accepted in lieu of filing a "NONE" report and a bar code will be printed below. If the supplement is required of your company but is not being filed for whatever reason, enter SEE EXPLANATION and provide an explanation following the interrogatory questions.

	Response
1. Will the Trusteed Surplus Statement be filed with the state of domicile and the NAIC with this statement?	NO
2. Will Supplement A to Schedule T (Medical Professional Liability Supplement) be filed with this statement?	YES
3. Will the Medicare Part D Coverage Supplement be filed with the state of domicile and the NAIC with this statement?	NO

Explanation:

- 1.
- 2.
- 3.

Bar Code:



Statement for March 31, 2009 of the **PROASSURANCE NATIONAL CAPITAL INSURANCE COMPANY (NCRIC, Inc.)**
Overflow Page for Write-Ins

Additional Write-ins for Assets:

	Current Statement Date			4 December 31, Prior Year Net Admitted Assets
	1 Assets	2 Nonadmitted Assets	3 Net Admitted Assets (Cols. 1 - 2)	
2304. Unsettled Investment Sales.....	307,652	307,652	0	
2397. Summary of remaining write-ins for Line 23.....	307,652	307,652	0	0

Statement for March 31, 2009 of the **PROASSURANCE NATIONAL CAPITAL INSURANCE COMPANY (NCRIC, Inc.)**
SCHEDULE A - VERIFICATION

Real Estate

	1 Year to Date	2 Prior Year Ended December 31
1. Book/adjusted carrying value, December 31 of prior year.....	0	
2. Cost of acquired:		
2.1 Actual cost at time of acquisition.....		
2.2 Additional investment made after acquisition.....		
3. Current year change in encumbrances.....		
4. Total gain (loss) on disposals.....		
5. Deduct amounts received on disposals.....		
6. Total foreign exchange change in book/adjusted carrying value.....		
7. Deduct current year's other than temporary impairment recognized.....		
8. Deduct current year's depreciation.....		
9. Book/adjusted carrying value at end of current period (Lines 1+2+3+4-5+6-7-8).....	0	0
10. Deduct total nonadmitted amounts.....		
11. Statement value at end of current period (Line 9 minus Line 10).....	0	0

SCHEDULE B - VERIFICATION

Mortgage Loans

	1 Year to Date	2 Prior Year Ended December 31
1. Book value/recorded investment excluding accrued interest, December 31 of prior year.....	0	
2. Cost of acquired:		
2.1 Actual cost at time of acquisition.....		
2.2 Additional investment made after acquisition.....		
3. Capitalized deferred interest and other.....		
4. Accrual of discount.....		
5. Unrealized valuation increase (decrease).....		
6. Total gain (loss) on disposals.....		
7. Deduct amounts received on disposals.....		
8. Deduct amortization of premium and mortgage interest points and commitment fees.....		
9. Total foreign exchange change in book value/recorded investment excluding accrued interest.....		
10. Deduct current year's other than temporary impairment recognized.....		
11. Book value/recorded investment excluding accrued interest at end of current period (Lines 1+2+3+4+5+6-7-8+9-10).....	0	0
12. Total valuation allowance.....		
13. Subtotal (Line 11 plus Line 12).....	0	0
14. Deduct total nonadmitted amounts.....		
15. Statement value at end of current period (Line 13 minus Line 14).....	0	0

SCHEDULE BA - VERIFICATION

Other Long-Term Invested Assets

	1 Year to Date	2 Prior Year Ended December 31
1. Book/adjusted carrying value, December 31 of prior year.....	475,900	479,700
2. Cost of acquired:		
2.1 Actual cost at time of acquisition.....		
2.2 Additional investment made after acquisition.....	16,300	500
3. Capitalized deferred interest and other.....		
4. Accrual of discount.....		
5. Unrealized valuation increase (decrease).....		
6. Total gain (loss) on disposals.....		
7. Deduct amounts received on disposals.....		4,300
8. Deduct amortization of premium and depreciation.....		
9. Total foreign exchange change in book/adjusted carrying value.....		
10. Deduct current year's other than temporary impairment recognized.....		
11. Book/adjusted carrying value at end of current period (Lines 1+2+3+4+5+6-7-8+9-10).....	492,200	475,900
12. Deduct total nonadmitted amounts.....		
13. Statement value at end of current period (Line 11 minus Line 12).....	492,200	475,900

SCHEDULE D - VERIFICATION

Bonds and Stocks

	1 Year to Date	2 Prior Year Ended December 31
1. Book/adjusted carrying value of bonds and stocks, December 31 of prior year.....	178,757,891	217,833,872
2. Cost of bonds and stocks acquired.....	11,706,337	36,324,366
3. Accrual of discount.....	20,220	116,269
4. Unrealized valuation increase (decrease).....	226,044	(515,430)
5. Total gain (loss) on disposals.....	(36,762)	2,208,149
6. Deduct consideration for bonds and stocks disposed of.....	5,515,477	75,238,242
7. Deduct amortization of premium.....	324,815	1,406,540
8. Total foreign exchange change in book/adjusted carrying value.....		
9. Deduct current year's other than temporary impairment recognized.....	450,844	564,553
10. Book/adjusted carrying value at end of current period (Lines 1+2+3+4+5-6-7+8-9).....	184,382,594	178,757,891
11. Deduct total nonadmitted amounts.....		
12. Statement value at end of current period (Line 10 minus Line 11).....	184,382,594	178,757,891

SCHEDULE D - PART 1B

Showing the Acquisitions, Dispositions and Non-Trading Activity
During the Current Quarter for all Bonds and Preferred Stock by Rating Class

	1	2	3	4	5	6	7	8
	Book/Adjusted Carrying Value Beginning of Current Quarter	Acquisitions During Current Quarter	Dispositions During Current Quarter	Non-Trading Activity During Current Quarter	Book/Adjusted Carrying Value End of First Quarter	Book/Adjusted Carrying Value End of Second Quarter	Book/Adjusted Carrying Value End of Third Quarter	Book/Adjusted Carrying Value December 31 Prior Year
BONDS								
1. Class 1 (a).....	233,429,504	235,438,757	246,873,302	(3,446,449)	218,548,510			233,429,504
2. Class 2 (a).....	20,553,679		1,804,779	2,859,037	21,607,936			20,553,679
3. Class 3 (a).....	337,975			(47,350)	290,625			337,975
4. Class 4 (a).....				37,500	37,500			
5. Class 5 (a).....								
6. Class 6 (a).....								
7. Total Bonds.....	254,321,158	235,438,757	248,678,081	(597,262)	240,484,571	0	0	254,321,158
PREFERRED STOCK								
8. Class 1.....								
9. Class 2.....								
10. Class 3.....								
11. Class 4.....								
12. Class 5.....								
13. Class 6.....								
14. Total Preferred Stock.....	0	0	0	0	0	0	0	0
15. Total Bonds and Preferred Stock.....	254,321,158	235,438,757	248,678,081	(597,262)	240,484,571	0	0	254,321,158

QS102

(a) Book/Adjusted Carrying Value column for the end of the current reporting period includes the following amount of non-rated short-term and cash equivalent bonds by NAIC designation:

NAIC 1 \$.....57,920,622; NAIC 2 \$.....0; NAIC 3 \$.....0; NAIC 4 \$.....0; NAIC 5 \$.....0; NAIC 6 \$.....0.

SCHEDULE DA - PART 1

Short-Term Investments

	1 Book/Adjusted Carrying Value	2 Par Value	3 Actual Cost	4 Interest Collected Year To Date	5 Paid for Accrued Interest Year To Date
9199999. Totals.....	57,920,622	XXX	57,920,622		

SCHEDULE DA - VERIFICATION

Short-Term Investments

	1 Year to Date	2 Prior Year Ended December 31
1. Book/adjusted carrying value, December 31 of prior year.....	64,770,185	10,385,667
2. Cost of short-term investments acquired.....	201,282,283	240,136,099
3. Accrual of discount.....		
4. Unrealized valuation increase (decrease).....		
5. Total gain (loss) on disposals.....		(102,000)
6. Deduct consideration received on disposals.....	208,131,845	185,649,581
7. Deduct amortization of premium.....		
8. Total foreign exchange change in book/adjusted carrying value.....		
9. Deduct current year's other than temporary impairment recognized.....		
10. Book/adjusted carrying value at end of current period (Lines 1+2+3+4+5-6-7+8-9).....	57,920,622	64,770,185
11. Deduct total nonadmitted amounts.....		
12. Statement value at end of current period (Line 10 minus Line 11).....	57,920,622	64,770,185

Sch. DB-Part F-Section 1
NONE

Sch. DB-Part F-Section 2
NONE

SCHEDULE E- VERIFICATION

Cash Equivalents

	1 Year to Date	2 Prior Year Ended December 31
1. Book/adjusted carrying value, December 31 of prior year.....	10,793,082	
2. Cost of cash equivalents acquired.....	24,197,121	333,736,694
3. Accrual of discount.....	3,797	232,200
4. Unrealized valuation increase (decrease).....		
5. Total gain (loss) on disposals.....		
6. Deduct consideration received on disposals.....	34,994,000	323,175,812
7. Deduct amortization of premium.....		
8. Total foreign exchange change in book/ adjusted carrying value.....		
9. Deduct current year's other than temporary impairment recognized.....		
10. Book/adjusted carrying value at end of current period (Lines 1+2+3+4+5-6-7+8-9).....	0	10,793,082
11. Deduct total nonadmitted amounts.....		
12. Statement value at end of current period (Line 10 minus Line 11).....	0	10,793,082

Sch. A-Part 2
NONE

Sch. A-Part 3
NONE

Sch. B-Part 2
NONE

Sch. B-Part 3
NONE

SCHEDULE BA - PART 2

Showing Other Long-Term Invested Assets ACQUIRED During the Current Quarter

1 CUSIP Identification	2 Name or Description	Location		5 Name of Vendor or General Partner	6 NAIC Desig- nation	7 Date Originally Acquired	8 Type and Strategy	9 Actual Cost at Time of Acquisition	10 Additional Investment Made After Acquisition	11 Amount of Encumbrances	12 Commitment for Additional Investment	13 Percentage of Ownership
		3 City	4 State									
Any Other Class of Admitted Asset - Affiliated												
000000 00 0	FEDERAL HOME LOAN BANK-ATLANTA.....	ATLANTA.....	GA.....	FEDERAL HOME LOAN BANK.....		03/30/2009			16,300			
3899999	Total - Any Other Class of Admitted Asset - Affiliated.....							0	16,300	0	0	XXX.....
4099999	Subtotal - Affiliated.....							0	16,300	0	0	XXX.....
4199999	Totals.....							0	16,300	0	0	XXX.....

QE03

SCHEDULE BA - PART 3

Showing Other Long-Term Invested Assets DISPOSED, Transferred or Repaid During the Current Quarter

1 CUSIP Identification	2 Name or Description	Location		5 Name of Purchaser or Nature of Disposal	6 Date Originally Acquired	7 Disposal Date	8 Book/Adjusted Carrying Value Less Encumbrances, Prior Year	Changes in Book/Adjusted Carrying Value					15 Book/Adjusted Carrying Value Less Encumbrances on Disposal	16 Consideration	17 Foreign Exchange Gain (Loss) on Disposal	18 Realized Gain (Loss) on Disposal	19 Total Gain (Loss) on Disposal	20 Investment Income
		3 City	4 State					9 Unrealized Valuation Increase (Decrease)	10 Current Year's (Depreciation) or (Amortization)/ Accretion	11 Current Year's Other Than Temporary Impairment Recognized	12 Capitalized Deferred Interest and Other	13 Total Change in B./A.C.V. (9+10-11+12)						
NONE																		

PROASSURANCE NATIONAL CAPITAL INSURANCE COMPANY (NCRIC, Inc.)

SCHEDULE D - PART 3

Show all Long-Term Bonds and Stock Acquired During the Current Quarter

1 CUSIP Identification	2 Description	3 Foreign	4 Date Acquired	5 Name of Vendor	6 Number of Shares of Stock	7 Actual Cost	8 Par Value	9 Paid for Accrued Interest and Dividends	10 NAIC Designation or Market Indicator (a)
Bonds - U.S. Government									
36202E 2B 4	G2 4370		02/24/2009	GREENWICH CAPITAL		2,571,094	2,500,000	9,931	1
912828 CJ 7	US TREASURY N/B		02/24/2009	UBS SECURITIES		2,296,649	2,000,000	26,768	1
0399999	Total - Bonds - U.S. Government					4,867,743	4,500,000	36,699	XXX
Bonds - U.S. Special Revenue and Special Assessment									
25477G AN 5	DISTRICT COLUMBIA INCOME TAX R		03/12/2009	MERRILL LYNCH		1,034,290	1,000,000		1FE
796253 S6 0	SAN ANTONIO TEX ELEC & GAS		02/27/2009	MERRILL LYNCH		1,557,345	1,500,000		1FE
3199999	Total - Bonds - U.S. Special Revenue & Special Assessments					2,591,635	2,500,000	0	XXX
Bonds - Industrial and Miscellaneous									
481247 AE 4	JPMORGAN CHASE & CO		02/24/2009	BARCLAYS AMERICAN		2,499,975	2,500,000	9,297	1FE
3899999	Total - Bonds - Industrial & Miscellaneous					2,499,975	2,500,000	9,297	XXX
8399997	Total - Bonds - Part 3					9,959,353	9,500,000	45,996	XXX
8399999	Total - Bonds					9,959,353	9,500,000	45,996	XXX
Common Stocks - Parent, Subsidiaries and Affiliates									
74267C 10 6	PROASSURANCE CORP		03/12/2009	SUNTRUST BANKS INC	41,500,000	1,746,984	XXX		L
9199999	Total - Common Stocks - Parent, Subsidiaries and Affiliates					1,746,984	XXX	0	XXX
9799997	Total - Common Stocks - Part 3					1,746,984	XXX	0	XXX
9799999	Total - Common Stocks					1,746,984	XXX	0	XXX
9899999	Total - Preferred and Common Stocks					1,746,984	XXX	0	XXX
9999999	Total - Bonds, Preferred and Common Stocks					11,706,337	XXX	45,996	XXX

(a) For all common stock bearing the NAIC market indicator "U" provide: the number of such issues:.....0.

QE04

SCHEDULE D - PART 4

Show All Long-Term Bonds and Stock Sold, Redeemed or Otherwise Disposed of During the Current Quarter

1 CUSIP Identification	2 Description	3 F o r e i g n	4 Disposal Date	5 Name of Purchaser	6 Number of Shares of Stock	7 Consideration	8 Par Value	9 Actual Cost	10 Prior Year Book/ Adjusted Carrying Value	Change in Book/Adjusted Carrying Value					16 Book/ Adjusted Carrying Value At Disposal Date	17 Foreign Exchange Gain (Loss) on Disposal	18 Realized Gain (Loss) on Disposal	19 Total Gain (Loss) on Disposal	20 Bond Interest/ Stock Dividends Received During Year	21 Maturity Date	22 NAIC Designation or Market Indicator (a)
										11 Unrealized Valuation Increase/ (Decrease)	12 Current Year's (Amortization)/ Accretion	13 Current Year's Other Than Temporary Impairment Recognized	14 Total Change in B./A.C.V. (11+12-13)	15 Total Foreign Exchange Change in B./A.C.V.							
Bonds - U.S. Government																					
36202E 2B 4	G2 4370.....		03/01/2009	MBS PAYMENT.....		7,973	7,973	8,200							7,973			0	37	12/01/2038	1.....
36202K 2A 2	G2 8869.....		03/01/2009	MBS PAYMENT.....		563	563	575	563						563			0	4	09/01/2021	1.....
36203G QN 6	GN 348861.....		03/01/2009	MBS PAYMENT.....		175	175	177	175						175			0	2	11/01/2020	1.....
36203K A4 6	GN 351127.....		03/01/2009	MBS PAYMENT.....		250	250	253	250						250			0	3	10/01/2021	1.....
36203L LQ 3	GN 352335.....		03/01/2009	MBS PAYMENT.....		4	4	4	4						4			0		04/01/2023	1.....
36203T BY 0	GN 358355.....		03/01/2009	MBS PAYMENT.....		163	163	164	163						163			0	2	04/01/2022	1.....
36204F FG 4	GN 368367.....		03/01/2009	MBS PAYMENT.....		243	243	257	243						243			0	3	11/01/2023	1.....
36208D M5 1	GN 447780.....		03/01/2009	MBS PAYMENT.....		15	15	15	15						15			0		09/01/2016	1.....
36209A R8 5	GN 465911.....		03/01/2009	MBS PAYMENT.....		841	841	814	840						841			0	13	02/01/2026	1.....
36209P SP 3	GN 477626.....		03/01/2009	MBS PAYMENT.....		853	853	867	853						853			0	10	02/01/2027	1.....
36210C NT 6	GN 488302.....		03/01/2009	MBS PAYMENT.....		2,294	2,294	2,220	2,235		59				2,294			0	37	03/01/2009	1.....
362207 YU 0	GN 299623.....		03/01/2009	MBS PAYMENT.....		2,688	2,688	2,717	2,688						2,688			0	46	10/01/2021	1.....
03999999	Total - Bonds - U.S. Government.....					16,062	16,062	16,263	8,029	0	59	0	59	0	16,062	0	0	0	157	XXX	XXX
Bonds - U.S. Special Revenue and Special Assessment																					
167664 RP 8	CHICAGO ILL PUB BLDG COMM BLDG.....		01/02/2009	SINK.....		10,000	10,000	11,382	10,000						10,000			0	350	01/01/2015	1.....
31288G 3S 9	FG C78009.....		03/01/2009	MBS PAYMENT.....		203	203	205	203						203			0	2	12/01/2031	1.....
31288J RK 4	FG C79490.....		03/01/2009	MBS PAYMENT.....		3,210	3,210	3,367	3,212		(2)		(2)		3,210			0	31	05/01/2032	1.....
3128H3 ZP 9	FG E96150.....		03/01/2009	MBS PAYMENT.....		58,505	58,505	61,339	58,548		(43)		(43)		58,505			0	401	10/01/2017	1.....
3128H4 WA 3	FG E96941.....		03/01/2009	MBS PAYMENT.....		29,629	29,629	30,369	29,640		(11)		(11)		29,629			0	267	10/01/2017	1.....
3128K8 TQ 9	FG A47759.....		03/01/2009	MBS PAYMENT.....		20,597	20,597	20,015	20,591		6		6		20,597			0	207	05/01/2035	1.....
3128M1 LA 5	FG G12221.....		03/01/2009	MBS PAYMENT.....		53,744	53,744	53,437	53,737		6		6		53,744			0	549	08/01/2020	1.....
3128M1 PE 3	FG G12321.....		03/01/2009	MBS PAYMENT.....		65,963	65,963	65,587	65,954		9		9		65,963			0	703	12/01/2020	1.....
31296K LQ 4	FG A11235.....		03/01/2009	MBS PAYMENT.....		992	992	1,014	992						992			0	7	06/01/2032	1.....
31296N ZY 6	FG A14359.....		03/01/2009	MBS PAYMENT.....		27,180	27,180	27,790	27,193		(13)		(13)		27,180			0	307	01/01/2033	1.....
31297B JC 7	FG A23859.....		03/01/2009	MBS PAYMENT.....		34,305	34,305	33,399	34,298		7		7		34,305			0	364	09/01/2033	1.....
31353G PG 1	FH 884023.....		03/16/2009	VARIOUS.....		502	502	544	502						502			0	13	08/01/2018	1.....
313615 TW 6	FN 50965.....		03/01/2009	MBS PAYMENT.....		101	101	99	101						101			0	1	07/01/2022	1.....
31371L 4L 0	FN 255627.....		03/01/2009	MBS PAYMENT.....		15,783	15,783	15,921	15,785		(2)		(2)		15,783			0	148	08/01/2024	1.....
31371L 4M 8	FN 255628.....		03/01/2009	MBS PAYMENT.....		14,216	14,216	14,571	14,221		(5)		(5)		14,216			0	148	08/01/2024	1.....
31371L 6C 8	FN 255667.....		03/01/2009	MBS PAYMENT.....		34,736	34,736	34,822	34,737		(1)		(1)		34,736			0	301	10/01/2024	1.....
31371L 6D 6	FN 255668.....		03/01/2009	MBS PAYMENT.....		17,958	17,958	18,365	17,964		(5)		(5)		17,958			0	180	09/01/2024	1.....
31371S QU 1	FN 260667.....		03/01/2009	MBS PAYMENT.....		37	37	36	37						37			0		05/01/2022	1.....
31372C AX 6	FN 268322.....		03/01/2009	MBS PAYMENT.....		333	333	323	333						333			0	4	03/01/2022	1.....
31372C MN 5	FN 268665.....		03/01/2009	MBS PAYMENT.....		179	179	174	179						179			0	2	10/01/2021	1.....
31372D TM 8	FN 269756.....		03/01/2009	MBS PAYMENT.....		32	32	31	32						32			0		01/01/2023	1.....
31372H RM 1	FN 273292.....		03/01/2009	MBS PAYMENT.....		91	91	88	91						91			0	1	11/01/2023	1.....
31372J 6Z 1	FN 274588.....		03/01/2009	MBS PAYMENT.....		19	19	18	19						19			0		01/01/2022	1.....
31372J KM 4	FN 274000.....		03/01/2009	MBS PAYMENT.....		613	613	596	613						613			0	7	11/01/2021	1.....
31372P JR 1	FN 278472.....		03/01/2009	MBS PAYMENT.....		7	7	7	7						7			0		02/01/2024	1.....
31372P ZD 4	FN 278940.....		03/01/2009	MBS PAYMENT.....		813	813	790	813						813			0	9	10/01/2021	1.....
31372X ZK 1	FN 286146.....		03/01/2009	MBS PAYMENT.....		8	8	8	8						8			0		01/01/2024	1.....
31378T P2 5	FN 408241.....		03/01/2009	MBS PAYMENT.....		634	634	620	634						634			0	6	06/01/2017	1.....
31383S JZ 4	FN 511580.....		03/01/2009	MBS PAYMENT.....		2,507	2,507	2,466	2,506		1		1		2,507			0	27	08/01/2013	1.....
31390L GN 0	FN 649205.....		03/01/2009	MBS PAYMENT.....		1,215	1,215	1,277	1,215						1,215			0	13	07/01/2030	1.....
31390R E7 4	FN 653658.....		03/01/2009	MBS PAYMENT.....		24,947	24,947	26,227	24,964		(18)		(18)		24,947			0	323	04/01/2031	1.....
31391S UF 7	FN 675650.....		03/01/2009	MBS PAYMENT.....		20,033	20,033	20,934	20,037		(4)		(4)		20,033			0	276	12/01/2031	1.....
31391S UT 3	FN 675706.....		03/01/2009	MBS PAYMENT.....		14,509	14,509	15,112	14,511		(2)		(2)		14,509			0	145	12/01/2031	1.....
31391U W6 8	FN 677569.....		03/01/2009	MBS PAYMENT.....		1,011	1,011	1,034	1,012						1,011			0	15	08/01/2031	1.....
31391U YM 1	FN 677616.....		03/01/2009	MBS PAYMENT.....		87	87	89	87						87			0	1	12/01/2031	1.....

QE05

SCHEDULE D - PART 4

Show All Long-Term Bonds and Stock Sold, Redeemed or Otherwise Disposed of During the Current Quarter

1 CUSIP Identification	2 Description	3 F o r e i g n	4 Disposal Date	5 Name of Purchaser	6 Number of Shares of Stock	7 Consideration	8 Par Value	9 Actual Cost	10 Prior Year Book/ Adjusted Carrying Value	Change in Book/Adjusted Carrying Value					16 Book/ Adjusted Carrying Value At Disposal Date	17 Foreign Exchange Gain (Loss) on Disposal	18 Realized Gain (Loss) on Disposal	19 Total Gain (Loss) on Disposal	20 Bond Interest/ Stock Dividends Received During Year	21 Maturity Date	22 NAIC Designation or Market Indicator
										11 Unrealized Valuation Increase/ (Decrease)	12 Current Year's (Amortization)/ Accretion	13 Current Year's Other Than Temporary Impairment Recognized	14 Total Change in B./A.C.V. (11+12-13)	15 Total Foreign Exchange Change in B./A.C.V.							
313970 SC 0	FG D32315.....		03/01/2009	MBS PAYMENT.....		45	45	48	45						45			0	1	12/01/2016	1.....
31400C AL 8	FN 683211.....		03/01/2009	MBS PAYMENT.....		20,618	20,618	21,179	20,620		(2)				20,618			0	191	02/01/2031	1.....
31400D X4 9	FN 684799.....		03/01/2009	MBS PAYMENT.....		2,201	2,201	2,291	2,201						2,201			0	22	10/01/2032	1.....
31400H HJ 5	FN 687933.....		03/01/2009	MBS PAYMENT.....		2,769	2,769	2,876	2,769						2,769			0	26	05/01/2032	1.....
31400T GU 5	FN 696911.....		03/01/2009	MBS PAYMENT.....		393	393	401	393						393			0	4	02/01/2032	1.....
31401C FB 4	FN 704062.....		03/01/2009	MBS PAYMENT.....		455	455	465	455						455			0	5	03/01/2032	1.....
31401H 3J 9	FN 709201.....		03/01/2009	MBS PAYMENT.....		2,312	2,312	2,303	2,312						2,312			0	24	06/01/2032	1.....
31401H L9 1	FN 708752.....		03/01/2009	MBS PAYMENT.....		19,935	19,935	20,919	19,948		(14)		(14)		19,935			0	175	11/01/2017	1.....
31401J AC 2	FN 709303.....		03/01/2009	MBS PAYMENT.....		11,379	11,379	11,740	11,381		(2)		(2)		11,379			0	117	10/01/2032	1.....
31401L NU 3	FN 711503.....		03/01/2009	MBS PAYMENT.....		272	272	274	272						272			0	3	10/01/2032	1.....
31401L P8 0	FN 711547.....		03/01/2009	MBS PAYMENT.....		27,718	27,718	28,895	27,721		(4)		(4)		27,718			0	147	05/01/2032	1.....
31401L V5 9	FN 711736.....		03/01/2009	MBS PAYMENT.....		1,534	1,534	1,543	1,534						1,534			0	20	04/01/2032	1.....
31401N GR 4	FN 713108.....		03/01/2009	MBS PAYMENT.....		2,698	2,698	2,714	2,698						2,698			0	32	06/01/2032	1.....
31401Y VD 4	FN 722512.....		03/01/2009	MBS PAYMENT.....		2,006	2,006	1,999	2,006						2,006			0	12	06/01/2032	1.....
31402A RB 4	FN 723282.....		03/01/2009	MBS PAYMENT.....		72,366	72,366	75,654	72,404		(39)		(39)		72,366			0	607	05/01/2017	1.....
31402D 5A 4	FN 726341.....		03/01/2009	MBS PAYMENT.....		1,641	1,641	1,646	1,641						1,641			0	12	12/01/2017	1.....
31402D XU 9	FN 726191.....		03/01/2009	MBS PAYMENT.....		1,565	1,565	1,569	1,565						1,565			0	15	01/01/2018	1.....
31402G SW 4	FN 728733.....		03/01/2009	MBS PAYMENT.....		791	791	804	791						791			0	8	09/01/2032	1.....
31402G WU 3	FN 728859.....		03/01/2009	MBS PAYMENT.....		206	206	207	206						206			0	2	04/01/2033	1.....
31402H N8 0	FN 729515.....		03/01/2009	MBS PAYMENT.....		15,544	15,544	15,702	15,545		(1)		(1)		15,544			0	170	05/01/2032	1.....
31402H PX 3	FN 729538.....		03/01/2009	MBS PAYMENT.....		4,542	4,542	4,641	4,542						4,542			0	65	11/01/2032	1.....
31402Q Y3 9	FN 735230.....		03/01/2009	MBS PAYMENT.....		31,826	31,826	31,647	31,824		2		2		31,826			0	346	01/01/2034	1.....
31402Y T5 3	FN 742272.....		03/01/2009	MBS PAYMENT.....		218	218	215	218						218			0	2	07/01/2033	1.....
31403D DX 4	FN 745418.....		03/01/2009	MBS PAYMENT.....		50,696	50,696	50,358	50,691		5		5		50,696			0	538	07/01/2035	1.....
31403F JX 3	FN 747378.....		03/01/2009	MBS PAYMENT.....		1,956	1,956	1,942	1,956						1,956			0	16	09/01/2032	1.....
31403V ZZ 1	FN 759592.....		03/01/2009	MBS PAYMENT.....		10,731	10,731	10,988	10,732		(1)		(1)		10,731			0	133	04/01/2033	1.....
31404B 3A 8	FN 764093.....		03/01/2009	MBS PAYMENT.....		3,056	3,056	3,127	3,056						3,056			0	29	12/01/2032	1.....
31404S H3 2	FN 777050.....		03/01/2009	MBS PAYMENT.....		7,012	7,012	6,927	7,011		1		1		7,012			0	77	05/01/2033	1.....
31404V TS 7	FN 780061.....		03/01/2009	MBS PAYMENT.....		8,644	8,644	8,566	8,644						8,644			0	92	04/01/2033	1.....
31405R AQ 9	FN 796615.....		03/01/2009	MBS PAYMENT.....		43,672	43,672	43,406	43,669		2		2		43,672			0	519	05/01/2034	1.....
31406B CY 4	FN 804787.....		03/01/2009	MBS PAYMENT.....		6,415	6,415	6,559	6,416		(1)		(1)		6,415			0	59	05/01/2034	1.....
31406E DM 3	FN 807508.....		03/01/2009	MBS PAYMENT.....		11,426	11,426	11,683	11,427		(1)		(1)		11,426			0	105	05/01/2034	1.....
31406E LL 6	FN 807731.....		03/01/2009	MBS PAYMENT.....		2,216	2,216	2,267	2,216						2,216			0	20	02/01/2034	1.....
31407C J6 5	FN 826585.....		03/01/2009	MBS PAYMENT.....		28,837	28,837	27,891	28,828		9		9		28,837			0	281	01/01/2035	1.....
31407N ZC 6	FN 836071.....		03/01/2009	MBS PAYMENT.....		20,887	20,887	20,170	20,881		6		6		20,887			0	198	04/01/2035	1.....
31408A J3 5	FN 845482.....		03/01/2009	MBS PAYMENT.....		14,209	14,209	14,133	14,208						14,209			0	130	11/01/2020	1.....
31408A TC 4	FN 845747.....		03/01/2009	MBS PAYMENT.....		17,743	17,743	17,133	17,739		4		4		17,743			0	138	04/01/2034	1.....
31408E RU 8	FN 849299.....		03/01/2009	MBS PAYMENT.....		55,297	55,297	54,934	55,291		6		6		55,297			0	553	07/01/2035	1.....
31408J MU 2	FN 852771.....		03/01/2009	MBS PAYMENT.....		3,259	3,259	3,150	3,259						3,259			0	27	12/01/2035	1.....
38373M PK 0	GNR 2005-32 B.....		03/01/2009	MBS PAYMENT.....		14,656	14,656	14,340	14,648		8		8		14,656			0	150	02/01/2011	1.....
38373M PT 1	GNR 2005-29 A.....		03/01/2009	MBS PAYMENT.....		2,256	2,256	2,187	2,255						2,256			0	15	02/01/2013	1.....
38373M RU 6	GNR 2005-87 A.....		03/01/2009	MBS PAYMENT.....		19,553	19,553	19,162	19,550		2		2		19,553			0	145	07/01/2011	1.....
38373M SB 7	GNR 2005-90 A.....		03/01/2009	MBS PAYMENT.....		3,995	3,995	3,855	3,994		1		1		3,995			0	25	09/01/2012	1.....
38373M SH 4	GNR 2006-3 A.....		03/01/2009	MBS PAYMENT.....		34,829	34,829	34,133	34,818		11		11		34,829			0	354	01/01/2012	1.....
38373M SP 6	GNR 2006-6 A.....		03/01/2009	MBS PAYMENT.....		3,366	3,366	3,299	3,365		1		1		3,366			0	23	02/01/2010	1.....
38373M SX 9	GNR 2006-5 A.....		03/01/2009	MBS PAYMENT.....		20,338	20,338	19,931	20,333		5		5		20,338			0	202	11/01/2012	1.....
38373M TD 2	GNR 2006-9 A.....		03/01/2009	MBS PAYMENT.....		7,199	7,199	6,983	7,197		2		2		7,199			0	50	10/01/2011	1.....
38373M TS 9	GNR 2006-18 A.....		03/01/2009	MBS PAYMENT.....		47,642	47,642	47,165	47,636		6		6		47,642			0	226	06/01/2010	1.....
38373M TZ 3	GNR 2006-19 A.....		03/01/2009	MBS PAYMENT.....		8,310	8,310	7,894	8,304		5		5		8,310			0	47	02/01/2011	1.....

QE05 1

PROASSURANCE NATIONAL CAPITAL INSURANCE COMPANY (NCRIC, Inc.)

SCHEDULE D - PART 4

Show All Long-Term Bonds and Stock Sold, Redeemed or Otherwise Disposed of During the Current Quarter

1	2	3	4	5	6	7	8	9	10	Change in Book/Adjusted Carrying Value					16	17	18	19	20	21	22
										11	12	13	14	15							
CUSIP Identification	Description	For eign	Disposal Date	Name of Purchaser	Number of Shares of Stock	Consideration	Par Value	Actual Cost	Prior Year Book/ Adjusted Carrying Value	Unrealized Valuation Increase/ (Decrease)	Current Year's (Amortization)/ Accretion	Current Year's Other Than Temporary Impairment Recognized	Total Change in B./A.C.V. (11+12-13)	Total Foreign Exchange Change in B./A.C.V.	Book/ Adjusted Carrying Value At Disposal Date	Foreign Exchange Gain (Loss) on Disposal	Realized Gain (Loss) on Disposal	Total Gain (Loss) on Disposal	Bond Interest/ Stock Dividends Received During Year	Maturity Date	NAIC Designation or Market Indicator (a)
38374B QM 8	GNR 2003-72 A.....		03/01/2009	MBS PAYMENT.....		10,090	10,090	10,090	10,090				0		10,090			0	54	09/01/2009	1.....
38374J E9 3	GNR 2004-97 AB.....		03/01/2009	MBS PAYMENT.....		4,739	4,739	4,536	4,737		2		2		4,739			0	24	07/01/2011	1.....
566854 CY 9	MARICOPA CNTY ARIZ POLLUTION.....		03/02/2009	PUT BY HOLDER.....		500,000	500,000	485,030	498,361		(2,234)		(2,234)		496,127		3,873	3,873	3,665	06/01/2035	2FE.....
60415N EB 4	MINNESOTA ST HSG FIN AGY.....		01/02/2009	CALLED BY ISSUER at 100.000.....		5,000	5,000	5,175	5,077		(77)		(77)		5,000			0	130	01/01/2017	1FE.....
3199999.	Total - Bonds - U.S. Special Revenue & Assessment.....					1,645,762	1,645,762	1,638,802	1,644,256	0	(2,375)	0	(2,375)	0	1,641,889	0	3,873	3,873	14,839	XXX	XXX
Bonds - Industrial and Miscellaneous																					
02639M AG 1	Amer Genl Mtge Ln Trst 2006-1 A1.....		01/01/2009	MBS PAYMENT.....		3,261	3,261	3,262	3,261				0		3,261			0	16	01/01/2009	1FE.....
03061N JR 1	AmeriCredit Auto Rec Trst 2005-DA A3.....		03/06/2009	MBS PAYMENT.....		37,580	37,580	37,575	37,560		20		20		37,580			0	307	05/06/2009	1FE.....
06423R BG 0	Bank One Iss Trust 2004-A1 A1.....		02/15/2009	MBS PAYMENT.....		290,000	290,000	289,596	289,987		13		13		290,000			0	1,668	02/15/2009	1FE.....
066050 CV 5	BANK OF AMERICA CORP.....		02/15/2009	MATURITY.....		1,100,000	1,100,000	1,140,788	1,101,587		(1,587)		(1,587)		1,100,000			0	32,313	02/15/2009	1FE.....
131700 AC 0	Calwest Trust 2002-Calwest Trust A.....		03/10/2009	BANK AMERICA.....		227,522	210,000	241,991	222,795		(771)		(771)		222,024		5,498	5,498	3,145	02/15/2012	1FE.....
17310E AB 4	Citi Res Mtge Secs 2006-2 A2.....		03/01/2009	MBS PAYMENT.....		324,223	324,223	324,213	324,217		6		6		324,223			0	3,727	06/01/2009	1FE.....
23322B EG 9	DLJ Comm Mtge 1999-CG1 A1B.....		01/01/2009	MBS PAYMENT.....		1,018	1,018	1,127	1,018				0		1,018			0	5	01/01/2009	1FE.....
349631 AM 3	FORTUNE BRANDS INC.....		02/04/2009	J.P. MORGAN.....		520,065	525,000	524,402	524,739		13		13		524,752		(4,687)	(4,687)	15,247	01/15/2011	2FE.....
46625Y XL 2	JP Morgan Comm Mtge Sec 2005-LDP5 A.....		03/01/2009	MBS PAYMENT.....		13,294	13,294	13,327	13,294				0		13,294			0	117	07/01/2010	1FE.....
59022H KZ 4	ML Mtge Trst 2005-CK11 A1.....		03/01/2009	MBS PAYMENT.....		25,395	25,395	25,458	25,395				0		25,395			0	226	06/01/2010	1FE.....
61746W ES 5	MSDW Capital 2001-PPM A2.....		03/01/2009	MBS PAYMENT.....		1,389	1,389	1,537	1,392		(3)		(3)		1,389			0	15	10/01/2011	1FE.....
61746W ET 3	MSDW Capital 2001-PPM A3.....		03/01/2009	MBS PAYMENT.....		4,863	4,863	5,494	4,874		(12)		(12)		4,863			0	53	10/01/2011	1FE.....
61746W PE 4	MSDW Capital 2002-TOP7 A1.....		03/01/2009	MBS PAYMENT.....		8,672	8,672	9,423	8,684		(12)		(12)		8,672			0	69	11/01/2010	1FE.....
694308 GB 7	PACIFIC GAS & ELECTRIC.....		03/01/2009	MATURITY.....		165,000	165,000	164,840	164,994		6		6		165,000			0	2,970	03/01/2009	1FE.....
6944P0 AA 3	PACIFIC LIFE GLOBAL FNDG.....		01/15/2009	MATURITY.....		300,000	300,000	299,283	299,994		6		6		300,000			0	5,625	01/15/2009	1FE.....
759950 GU 6	Renaissance HE Ln Trst 2006-1 AF2.....		03/01/2009	MBS PAYMENT.....		88,917	88,917	88,916	88,917				0		88,917			0	847	06/01/2009	1FE.....
78355H JE 0	RYDER SYSTEM INC.....		03/15/2009	MATURITY.....		215,000	215,000	206,372	214,465		535		535		215,000			0	3,428	03/15/2009	2FE.....
84751P LM 9	Spec Unwrtg Res Fin 2006-BC2 A2B.....		01/26/2009	VARIOUS.....		272,454	463,090	313,901	313,901				0		313,901		(41,446)	(41,446)	4,072	11/01/2011	2FE.....
111013 AB 4	BRITISH SKY BROADCASTING.....	F	02/23/2009	MATURITY.....		255,000	255,000	286,911	255,978		(978)		(978)		255,000			0	8,766	02/23/2009	2FE.....
3899999.	Total - Bonds - Industrial & Miscellaneous.....					3,853,653	4,031,702	3,978,416	3,897,052	0	(2,764)	0	(2,764)	0	3,894,289	0	(40,635)	(40,635)	82,616	XXX	XXX
8399997.	Total - Bonds - Part 4.....					5,515,477	5,693,526	5,633,481	5,549,337	0	(5,080)	0	(5,080)	0	5,552,240	0	(36,762)	(36,762)	97,612	XXX	XXX
8399999.	Total - Bonds.....					5,515,477	5,693,526	5,633,481	5,549,337	0	(5,080)	0	(5,080)	0	5,552,240	0	(36,762)	(36,762)	97,612	XXX	XXX
9999999.	Total - Bonds, Preferred and Common Stocks.....					5,515,477	5,693,526	5,633,481	5,549,337	0	(5,080)	0	(5,080)	0	5,552,240	0	(36,762)	(36,762)	97,612	XXX	XXX

QE05.2

(a) For all common stock bearing the NAIC market indicator "U" provide: the number of such issues:.....0.

Sch. DB-Part A-Section 1
NONE

Sch. DB-Part B-Section 1
NONE

Sch. DB-Part C-Section 1
NONE

Sch. DB-Part D-Section 1
NONE

SCHEDULE E - PART 1 - CASH

Month End Depository Balances

1 Depository	2 Code	3 Rate of Interest	4 Amount of Interest Received During Current Quarter	5 Amount of Interest Accrued at Current Statement Date	Book Balance at End of Each Month During Current Quarter			9 *
					6 First Month	7 Second Month	8 Third Month	
Open Depositories								
BANK OF AMERICA.....	ATLANTA, GA.....5,01010,82236,466	XXX
US BANK.....	BIRMINGHAM, AL.....(432,070)(2,858,628)(89,786)	XXX
FEDERAL HOME LOAN BANK.....	ATLANTA, GA.....16,52116,513205	XXX
0199999. Total Open Depositories.....	XXX.....	XXX.....00(410,539)(2,831,293)(53,115)	XXX
0399999. Total Cash on Deposit.....	XXX.....	XXX.....00(410,539)(2,831,293)(53,115)	XXX
0599999. Total Cash.....	XXX.....	XXX.....00(410,539)(2,831,293)(53,115)	XXX

SCHEDULE E - PART 2 - CASH EQUIVALENTS

Show Investments Owned End of Current Quarter

1 Description	2 Code	3 Date Acquired	4 Rate of Interest	5 Maturity Date	6 Book/Adjusted Carrying Value	7 Amount of Interest Due & Accrued	8 Amount Received During Year
------------------	-----------	-----------------------	--------------------------	-----------------------	--------------------------------------	--	-------------------------------------

NONE

QE09



SUPPLEMENT "A" TO SCHEDULE T

**EXHIBIT OF MEDICAL PROFESSIONAL LIABILITY PREMIUMS WRITTEN
ALLOCATED BY STATES AND TERRITORIES**

Designate the type of health care providers reported on this page.

Physicians - Including Surgeons and Osteopaths

States, Etc.	1 Direct Premiums Written	2 Direct Premiums Earned	Direct Losses Paid		5 Direct Losses Incurred	Direct Losses Unpaid		8 Direct Losses Incurred But Not Reported
			3 Amount	4 Number of Claims		6 Amount Reported	7 Number of Claims	
1. Alabama.....AL								
2. Alaska.....AK								
3. Arizona.....AZ								
4. Arkansas.....AR								
5. California.....CA								
6. Colorado.....CO								
7. Connecticut.....CT								
8. Delaware.....DE			150,000	1		5,180,012	16	547,154
9. District of Columbia.....DC	9,458,670	3,936,596	1,700,000	1	1,521,106	27,600,000	131	26,841,574
10. Florida.....FL								
11. Georgia.....GA								
12. Hawaii.....HI								
13. Idaho.....ID								
14. Illinois.....IL								
15. Indiana.....IN								
16. Iowa.....IA								
17. Kansas.....KS								
18. Kentucky.....KY								
19. Louisiana.....LA								
20. Maine.....ME								
21. Maryland.....MD			600,000	1		8,484,000	32	4,527,545
22. Massachusetts.....MA								
23. Michigan.....MI								
24. Minnesota.....MN								
25. Mississippi.....MS								
26. Missouri.....MO								
27. Montana.....MT								
28. Nebraska.....NE								
29. Nevada.....NV								
30. New Hampshire.....NH								
31. New Jersey.....NJ								
32. New Mexico.....NM								
33. New York.....NY								
34. North Carolina.....NC								
35. North Dakota.....ND								
36. Ohio.....OH								
37. Oklahoma.....OK								
38. Oregon.....OR								
39. Pennsylvania.....PA								
40. Rhode Island.....RI								
41. South Carolina.....SC								
42. South Dakota.....SD								
43. Tennessee.....TN								
44. Texas.....TX								
45. Utah.....UT								
46. Vermont.....VT								
47. Virginia.....VA			2,132,490	4		13,362,500	56	7,226,061
48. Washington.....WA								
49. West Virginia.....WV			269,231	1		858,769	6	1,905,601
50. Wisconsin.....WI								
51. Wyoming.....WY								
52. American Samoa.....AS								
53. Guam.....GU								
54. Puerto Rico.....PR								
55. US Virgin Islands.....VI								
56. Northern Mariana Islands.....MP								
57. Canada.....CN								
58. Aggregate Other Alien.....OT	0	0	0	0	0	0	0	0
59. Totals.....	9,458,670	3,936,596	4,851,721	8	1,521,106	55,485,281	241	41,047,935

DETAILS OF WRITE-INS

5801.								
5802.								
5803.								
5898. Summary of remaining write-ins for Line 58 from overflow page.....	0	0	0	0	0	0	0	0
5899. Totals (Lines 5801 thru 5803 + 5898) (Line 58 above).....	0	0	0	0	0	0	0	0



SUPPLEMENT "A" TO SCHEDULE T

**EXHIBIT OF MEDICAL PROFESSIONAL LIABILITY PREMIUMS WRITTEN
ALLOCATED BY STATES AND TERRITORIES**

Designate the type of health care providers reported on this page.

Hospitals

States, Etc.	1 Direct Premiums Written	2 Direct Premiums Earned	Direct Losses Paid		5 Direct Losses Incurred	Direct Losses Unpaid		8 Direct Losses Incurred But Not Reported
			3 Amount	4 Number of Claims		6 Amount Reported	7 Number of Claims	
1. Alabama.....AL								
2. Alaska.....AK								
3. Arizona.....AZ								
4. Arkansas.....AR								
5. California.....CA								
6. Colorado.....CO								
7. Connecticut.....CT								
8. Delaware.....DE								
9. District of Columbia.....DC								
10. Florida.....FL								
11. Georgia.....GA								
12. Hawaii.....HI								
13. Idaho.....ID								
14. Illinois.....IL								
15. Indiana.....IN								
16. Iowa.....IA								
17. Kansas.....KS								
18. Kentucky.....KY								
19. Louisiana.....LA								
20. Maine.....ME								
21. Maryland.....MD								
22. Massachusetts.....MA								
23. Michigan.....MI								
24. Minnesota.....MN								
25. Mississippi.....MS								
26. Missouri.....MO								
27. Montana.....MT								
28. Nebraska.....NE								
29. Nevada.....NV								
30. New Hampshire.....NH								
31. New Jersey.....NJ								
32. New Mexico.....NM								
33. New York.....NY								
34. North Carolina.....NC								
35. North Dakota.....ND								
36. Ohio.....OH								
37. Oklahoma.....OK								
38. Oregon.....OR								
39. Pennsylvania.....PA								
40. Rhode Island.....RI								
41. South Carolina.....SC								
42. South Dakota.....SD								
43. Tennessee.....TN								
44. Texas.....TX								
45. Utah.....UT								
46. Vermont.....VT								
47. Virginia.....VA								
48. Washington.....WA								
49. West Virginia.....WV								
50. Wisconsin.....WI								
51. Wyoming.....WY								
52. American Samoa.....AS								
53. Guam.....GU								
54. Puerto Rico.....PR								
55. US Virgin Islands.....VI								
56. Northern Mariana Islands.....MP								
57. Canada.....CN								
58. Aggregate Other Alien.....OT	0	0	0	0	0	0	0	0
59. Totals.....	0	0	0	0	0	0	0	0

NONE

DETAILS OF WRITE-INS

5801.								
5802.								
5803.								
5898. Summary of remaining write-ins for Line 58 from overflow page.....	0	0	0	0	0	0	0	0
5899. Totals (Lines 5801 thru 5803 + 5898) (Line 58 above).....	0	0	0	0	0	0	0	0



SUPPLEMENT "A" TO SCHEDULE T

**EXHIBIT OF MEDICAL PROFESSIONAL LIABILITY PREMIUMS WRITTEN
ALLOCATED BY STATES AND TERRITORIES**

Designate the type of health care providers reported on this page.

Other Health Care Professionals, Including Dentists, Chiropractors and Podiatrists

States, Etc.	1 Direct Premiums Written	2 Direct Premiums Earned	Direct Losses Paid		5 Direct Losses Incurred	Direct Losses Unpaid		8 Direct Losses Incurred But Not Reported
			3 Amount	4 Number of Claims		6 Amount Reported	7 Number of Claims	
1. Alabama.....AL								
2. Alaska.....AK								
3. Arizona.....AZ								
4. Arkansas.....AR								
5. California.....CA								
6. Colorado.....CO								
7. Connecticut.....CT								
8. Delaware.....DE								
9. District of Columbia.....DC	283	1,762			618			10,618
10. Florida.....FL								
11. Georgia.....GA								
12. Hawaii.....HI								
13. Idaho.....ID								
14. Illinois.....IL								
15. Indiana.....IN								
16. Iowa.....IA								
17. Kansas.....KS								
18. Kentucky.....KY								
19. Louisiana.....LA								
20. Maine.....ME								
21. Maryland.....MD								
22. Massachusetts.....MA								
23. Michigan.....MI								
24. Minnesota.....MN								
25. Mississippi.....MS								
26. Missouri.....MO								
27. Montana.....MT								
28. Nebraska.....NE								
29. Nevada.....NV								
30. New Hampshire.....NH								
31. New Jersey.....NJ								
32. New Mexico.....NM								
33. New York.....NY								
34. North Carolina.....NC								
35. North Dakota.....ND								
36. Ohio.....OH								
37. Oklahoma.....OK								
38. Oregon.....OR								
39. Pennsylvania.....PA								
40. Rhode Island.....RI								
41. South Carolina.....SC								
42. South Dakota.....SD								
43. Tennessee.....TN								
44. Texas.....TX								
45. Utah.....UT								
46. Vermont.....VT								
47. Virginia.....VA								
48. Washington.....WA								
49. West Virginia.....WV								
50. Wisconsin.....WI								
51. Wyoming.....WY								
52. American Samoa.....AS								
53. Guam.....GU								
54. Puerto Rico.....PR								
55. US Virgin Islands.....VI								
56. Northern Mariana Islands.....MP								
57. Canada.....CN								
58. Aggregate Other Alien.....OT	0	0	0	0	0	0	0	0
59. Totals.....	283	1,762	0	0	618	0	0	10,618

DETAILS OF WRITE-INS

5801.								
5802.								
5803.								
5898. Summary of remaining write-ins for Line 58 from overflow page.....	0	0	0	0	0	0	0	0
5899. Totals (Lines 5801 thru 5803 + 5898) (Line 58 above).....	0	0	0	0	0	0	0	0