

QUARTERLY STATEMENT

OF THE

**AMERICAN MEDICAL INSURANCE
EXCHANGE**

Of

**INDIANAPOLIS
in the state of IN**

**to the Insurance Department
of the State of**

For the Period Ended
September 30, 2006

2006



QUARTERLY STATEMENT

As of September 30, 2006
of the Condition and Affairs of the

AMERICAN MEDICAL INSURANCE EXCHANGE

NAIC Group Code.....2698, 2698 (Current Period) (Prior Period)	NAIC Company Code..... 31402	Employer's ID Number..... 35-1756545
Organized under the Laws of IN	State of Domicile or Port of Entry IN	Country of Domicile US
Incorporated/Organized..... August 31, 1988	Commenced Business..... November 1, 1988	
Statutory Home Office	5975 CASTLE CREEK PARKWAY, SUITE 300..... INDIANAPOLIS IN 46250-4203 <i>(Street and Number) (City or Town, State and Zip Code)</i>	
Main Administrative Office	100 BROOKWOOD PLACE..... BIRMINGHAM AL 35209 <i>(Street and Number) (City or Town, State and Zip Code)</i>	205-877-4400 <i>(Area Code) (Telephone Number)</i>
Mail Address	100 BROOKWOOD PLACE..... BIRMINGHAM AL 35209 <i>(Street and Number or P. O. Box) (City or Town, State and Zip Code)</i>	
Primary Location of Books and Records	100 BROOKWOOD PLACE..... BIRMINGHAM AL 35209 <i>(Street and Number) (City or Town, State and Zip Code)</i>	205-877-4400 <i>(Area Code) (Telephone Number)</i>
Internet Website Address	N/A	
Statutory Statement Contact	JEFFREY M. MANGET <i>(Name)</i> jmanget@proassurance.com <i>(E-Mail Address)</i>	205-877-4442 <i>(Area Code) (Telephone Number) (Extension)</i> 205-868-4029 <i>(Fax Number)</i>
Policyowner Relations Contact	100 BROOKWOOD PLACE..... BIRMINGHAM AL 35209 <i>(Street and Number) (City or Town, State and Zip Code)</i>	205-877-4400 <i>(Area Code) (Telephone Number) (Extension)</i>

OFFICERS

Name	Title	Name	Title
1. DARRYL KEITH THOMAS	PRESIDENT	2. KATHRYN ANNE NEVILLE	SECRETARY
3. JAMES JOSEPH MORELLO	TREASURER	4.	

OTHER

HOWARD HARLEY FRIEDMAN #	VICE PRESIDENT	LOIS JEAN WYRICK	VICE PRESIDENT
--------------------------	----------------	------------------	----------------

DIRECTORS OR TRUSTEES

VICTOR THOMAS ADAMO	PAUL RICHARD BUTRUS	AUBREY DERRILL CROWE	HOWARD HARLEY FRIEDMAN
EDWARD LEWIS RAND, JR.	DARRYL KEITH THOMAS	LOIS JEAN WYRICK	

State of..... ALABAMA
County of..... JEFFERSON

The officers of this reporting entity being duly sworn, each depose and say that they are the described officers of said reporting entity, and that on the reporting period stated above, all of the herein described assets were the absolute property of the said reporting entity, free and clear from any liens or claims thereon, except as herein stated, and that this statement, together with related exhibits, schedules and explanations therein contained, annexed or referred to, is a full and true statement of all the assets and liabilities and of the condition and affairs of the said reporting entity as of the reporting period stated above, and of its income and deductions therefrom for the period ended, and have been completed in accordance with the NAIC *Annual Statement Instructions and Accounting Practices and Procedures* manual except to the extent that: (1) state law may differ; or, (2) that state rules or regulations require differences in reporting not related to accounting practices and procedures, according to the best of their information, knowledge and belief, respectively. Furthermore, the scope of this attestation by the described officers also includes the related corresponding electronic filing with the NAIC, when required, that is an exact copy (except for formatting differences due to electronic filing) of the enclosed statement. The electronic filing may be requested by various regulators in lieu of or in addition to the enclosed statement.

_____ (Signature) DARRYL KEITH THOMAS 1. (Printed Name) PRESIDENT (Title)	_____ (Signature) KATHRYN ANNE NEVILLE 2. (Printed Name) SECRETARY (Title)	_____ (Signature) JAMES JOSEPH MORELLO 3. (Printed Name) TREASURER (Title)
--	---	---

Subscribed and sworn to before me
This _____ day of _____

a. Is this an original filing? Yes [X] No []

b. If no: 1. State the amendment number _____
2. Date filed _____
3. Number of pages attached _____

AMERICAN MEDICAL INSURANCE EXCHANGE

ASSETS

	Current Statement Date			4 December 31 Prior Year Net Admitted Assets
	1 Assets	2 Nonadmitted Assets	3 Net Admitted Assets (Cols. 1 - 2)	
1. Bonds.....	100,938		100,938	99,956
2. Stocks:				
2.1 Preferred stocks.....			.0	
2.2 Common stocks.....			.0	
3. Mortgage loans on real estate:				
3.1 First liens.....			.0	
3.2 Other than first liens.....			.0	
4. Real estate:				
4.1 Properties occupied by the company (less \$.....0 encumbrances).....			.0	
4.2 Properties held for the production of income (less \$.....0 encumbrances).....			.0	
4.3 Properties held for sale (less \$.....0 encumbrances).....			.0	
5. Cash (\$.....965), cash equivalents (\$.....0) and short-term investments (\$.....443,395).....	444,360		444,360	433,283
6. Contract loans (including \$.....0 premium notes).....			.0	
7. Other invested assets.....			.0	
8. Receivables for securities.....			.0	
9. Aggregate write-ins for invested assets.....	.0	.0	.0	.0
10. Subtotals, cash and invested assets (Lines 1 to 9).....	545,298	.0	545,298	533,239
11. Title Plants less \$.....0 charged off (for Title insurers only).....			.0	
12. Investment income due and accrued.....	2,302		2,302	2,272
13. Premiums and considerations:				
13.1 Uncollected premiums and agents' balances in the course of collection.....			.0	
13.2 Deferred premiums, agents' balances and installments booked but deferred and not yet due (including \$.....0 earned but unbilled premiums).....			.0	
13.3 Accrued retrospective premiums.....			.0	
14. Reinsurance:				
14.1 Amounts recoverable from reinsurers.....			.0	
14.2 Funds held by or deposited with reinsured companies.....			.0	
14.3 Other amounts receivable under reinsurance contracts.....			.0	
15. Amounts receivable relating to uninsured plans.....			.0	
16.1 Current federal and foreign income tax recoverable and interest thereon.....			.0	
16.2 Net deferred tax asset.....			.0	
17. Guaranty funds receivable or on deposit.....			.0	
18. Electronic data processing equipment and software.....			.0	
19. Furniture and equipment, including health care delivery assets (\$.....0).....			.0	
20. Net adjustment in assets and liabilities due to foreign exchange rates.....			.0	
21. Receivables from parent, subsidiaries and affiliates.....			.0	
22. Health care (\$.....0) and other amounts receivable.....			.0	
23. Aggregate write-ins for other than invested assets.....	.0	.0	.0	.0
24. Total assets excluding Separate Accounts, Segregated Accounts and Protected Cell Accounts (Lines 10 through 23).....	547,600	.0	547,600	535,511
25. From Separate Accounts, Segregated Accounts and Protected Cell Accounts.....			.0	
26. TOTALS (Lines 24 and 25).....	547,600	.0	547,600	535,511

DETAILS OF WRITE-INS

0901.....			.0	
0902.....			.0	
0903.....			.0	
0998. Summary of remaining write-ins for Line 9 from overflow page.....	.0	.0	.0	.0
0999. Totals (Lines 0901 thru 0903 plus 0998) (Line 9 above).....	.0	.0	.0	.0
2301.....			.0	
2302.....			.0	
2303.....			.0	
2398. Summary of remaining write-ins for Line 23 from overflow page.....	.0	.0	.0	.0
2399. Totals (Lines 2301 thru 2303 plus 2398) (Line 23 above).....	.0	.0	.0	.0

LIABILITIES, SURPLUS AND OTHER FUNDS

	1 Current Statement Date	2 December 31 Prior Year
1. Losses (current accident year \$.....0).....		
2. Reinsurance payable on paid losses and loss adjustment expenses.....		
3. Loss adjustment expenses.....		
4. Commissions payable, contingent commissions and other similar charges.....		
5. Other expenses (excluding taxes, licenses and fees).....	56	214
6. Taxes, licenses and fees (excluding federal and foreign income taxes).....		
7.1 Current federal and foreign income taxes (including \$.....0 on realized capital gains (losses)).....	1,143	758
7.2 Net deferred tax liability.....		
8. Borrowed money \$.....0 and interest thereon \$.....0.....		
9. Unearned premiums (after deducting unearned premiums for ceded reinsurance of \$.....0 and including warranty reserves of \$.....0).....		
10. Advance premium.....		
11. Dividends declared and unpaid:		
11.1 Stockholders.....		
11.2 Policyholders.....		
12. Ceded reinsurance premiums payable (net of ceding commissions).....		
13. Funds held by company under reinsurance treaties.....		
14. Amounts withheld or retained by company for account of others.....		
15. Remittances and items not allocated.....		
16. Provision for reinsurance.....		
17. Net adjustments in assets and liabilities due to foreign exchange rates.....		
18. Drafts outstanding.....		
19. Payable to parent, subsidiaries and affiliates.....	14	109
20. Payable for securities.....		
21. Liability for amounts held under uninsured plans.....		
22. Capital notes \$.....0 and interest thereon \$.....0.....		
23. Aggregate write-ins for liabilities.....	0	0
24. Total liabilities excluding protected cell liabilities (Lines 1 through 23).....	1,213	1,081
25. Protected cell liabilities.....		
26. Total liabilities (Lines 24 and 25).....	1,213	1,081
27. Aggregate write-ins for special surplus funds.....	0	0
28. Common capital stock.....		
29. Preferred capital stock.....		
30. Aggregate write-ins for other than special surplus funds.....	865,000	865,000
31. Surplus notes.....		
32. Gross paid in and contributed surplus.....		
33. Unassigned funds (surplus).....	(318,613)	(330,570)
34. Less treasury stock, at cost:		
34.10.000 shares common (value included in Line 28 \$.....0).....		
34.20.000 shares preferred (value included in Line 29 \$.....0).....		
35. Surplus as regards policyholders (Lines 27 to 33, less 34).....	546,387	534,430
36. TOTALS.....	547,600	535,511

DETAILS OF WRITE-INS

2301.		
2302.		
2303.		
2398. Summary of remaining write-ins for Line 23 from overflow page.....	0	0
2399. Totals (Lines 2301 thru 2303 plus 2398) (Line 23 above).....	0	0
2701.		
2702.		
2703.		
2798. Summary of remaining write-ins for Line 27 from overflow page.....	0	0
2799. Totals (Lines 2701 thru 2703 plus 2798) (Line 27 above).....	0	0
3001. Guaranty Fund.....	865,000	865,000
3002.		
3003.		
3098. Summary of remaining write-ins for Line 30 from overflow page.....	0	0
3099. Totals (Lines 3001 thru 3003 plus 3098) (Line 30 above).....	865,000	865,000

AMERICAN MEDICAL INSURANCE EXCHANGE STATEMENT OF INCOME

	1 Current Year to Date	2 Prior Year to Date	3 Prior Year Ended December 31
UNDERWRITING INCOME			
1. Premiums earned:			
1.1 Direct..... (written \$.....0).....			
1.2 Assumed..... (written \$.....0).....			
1.3 Ceded..... (written \$.....0).....			
1.4 Net..... (written \$.....0).....	0	0	0
DEDUCTIONS:			
2. Losses incurred (current accident year \$.....0):			
2.1 Direct.....			
2.2 Assumed.....			
2.3 Ceded.....			
2.4 Net.....	0	0	0
3. Loss expenses incurred.....			
4. Other underwriting expenses incurred.....	3,586	2,498	2,533
5. Aggregate write-ins for underwriting deductions.....	0	0	0
6. Total underwriting deductions (Lines 2 through 5).....	3,586	2,498	2,533
7. Net income of protected cells.....			
8. Net underwriting gain (loss) (Line 1 minus Line 6 + Line 7).....	(3,586)	(2,498)	(2,533)
INVESTMENT INCOME			
9. Net investment income earned.....	17,663	7,692	11,451
10. Net realized capital gains (losses) less capital gains tax of \$.....0.....	(10)		
11. Net investment gain (loss) (Lines 9 + 10).....	17,653	7,692	11,451
OTHER INCOME			
12. Net gain or (loss) from agents' or premium balances charged off (amount recovered \$.....0 amount charged off \$.....0).....	0		
13. Finance and service charges not included in premiums.....			
14. Aggregate write-ins for miscellaneous income.....	0	4	4
15. Total other income (Lines 12 through 14).....	0	4	4
16. Net income before dividends to policyholders, after capital gains tax and before all other federal and foreign income taxes (Lines 8 + 11 + 15).....	14,067	5,198	8,922
17. Dividends to policyholders.....			
18. Net income after dividends to policyholders, after capital gains tax and before all other federal and foreign income taxes (Line 16 minus Line 17).....	14,067	5,198	8,922
19. Federal and foreign income taxes incurred.....	2,110	487	795
20. Net income (Line 18 minus Line 19) (to Line 22).....	11,957	4,711	8,127
CAPITAL AND SURPLUS ACCOUNT			
21. Surplus as regards policyholders, December 31 prior year.....	534,430	526,303	526,303
22. Net income (from Line 20).....	11,957	4,711	8,127
23. Net transfers (to) from Protected Cell accounts.....			
24. Change in net unrealized capital gains or losses less capital gains tax of \$.....0.....			
25. Change in net unrealized foreign exchange capital gain (loss).....			
26. Change in net deferred income tax.....			
27. Change in nonadmitted assets.....			
28. Change in provision for reinsurance.....			
29. Change in surplus notes.....			
30. Surplus (contributed to) withdrawn from protected cells.....			
31. Cumulative effect of changes in accounting principles.....			
32. Capital changes:			
32.1 Paid in.....			
32.2 Transferred from surplus (Stock Dividend).....			
32.3 Transferred to surplus.....			
33. Surplus adjustments:			
33.1 Paid in.....			
33.2 Transferred to capital (Stock Dividend).....			
33.3 Transferred from capital.....			
34. Net remittances from or (to) Home Office.....			
35. Dividends to stockholders.....			
36. Change in treasury stock.....			
37. Aggregate write-ins for gains and losses in surplus.....	0	0	0
38. Change in surplus as regards policyholders (Lines 22 through 37).....	11,957	4,711	8,127
39. Surplus as regards policyholders, as of statement date (Lines 21 plus 38).....	546,387	531,014	534,430

DETAILS OF WRITE-INS			
0501.			
0502.			
0503.			
0598. Summary of remaining write-ins for Line 5 from overflow page.....	0	0	0
0599. Totals (Lines 0501 thru 0503 plus 0598) (Line 5 above).....	0	0	0
1401. Other Income.....		4	4
1402.			
1403.			
1498. Summary of remaining write-ins for Line 14 from overflow page.....	0	0	0
1499. Totals (Lines 1401 thru 1403 plus 1498) (Line 14 above).....	0	4	4
3701.			
3702.			
3703.			
3798. Summary of remaining write-ins for Line 37 from overflow page.....	0	0	0
3799. Totals (Lines 3701 thru 3703 plus 3798) (Line 37 above).....	0	0	0

AMERICAN MEDICAL INSURANCE EXCHANGE CASH FLOW

	1 Current Year to Date	2 Prior Year Ended December 31
CASH FROM OPERATIONS		
1. Premiums collected net of reinsurance.....		
2. Net investment income.....	17,651	11,603
3. Miscellaneous income.....		4
4. Total (Lines 1 through 3).....	17,651	11,607
5. Benefit and loss related payments.....		
6. Net transfers to Separate, Segregated Accounts and Protected Cell Accounts.....		
7. Commissions, expenses paid and aggregate write-ins for deductions.....	3,744	2,486
8. Dividends paid to policyholders.....		
9. Federal and foreign income taxes paid (recovered) \$.....0 net tax on capital gains (losses).....	1,725	(561)
10. Total (Lines 5 through 9).....	5,469	1,925
11. Net cash from operations (Line 4 minus Line 10).....	12,182	9,682
CASH FROM INVESTMENTS		
12. Proceeds from investments sold, matured or repaid:		
12.1 Bonds.....	100,000	400,000
12.2 Stocks.....		
12.3 Mortgage loans.....		
12.4 Real estate.....		
12.5 Other invested assets.....		
12.6 Net gains or (losses) on cash, cash equivalents and short-term investments.....	(10)	
12.7 Miscellaneous proceeds.....		
12.8 Total investment proceeds (Lines 12.1 to 12.7).....	99,990	400,000
13. Cost of investments acquired (long-term only):		
13.1 Bonds.....	101,000	
13.2 Stocks.....		
13.3 Mortgage loans.....		
13.4 Real estate.....		
13.5 Other invested assets.....		
13.6 Miscellaneous applications.....		
13.7 Total investments acquired (Lines 13.1 to 13.6).....	101,000	0
14. Net increase (decrease) in contract loans and premium notes.....		
15. Net cash from investments (Line 12.8 minus Line 13.7 and Line 14).....	(1,010)	400,000
CASH FROM FINANCING AND MISCELLANEOUS SOURCES		
16. Cash provided (applied):		
16.1 Surplus notes, capital notes.....		
16.2 Capital and paid in surplus, less treasury stock.....		
16.3 Borrowed funds.....		
16.4 Net deposits on deposit-type contracts and other insurance liabilities.....		
16.5 Dividends to stockholders.....		
16.6 Other cash provided (applied).....	(95)	105
17. Net cash from financing and miscellaneous sources (Lines 16.1 to 16.4 minus Line 16.5 plus Line 16.6).....	(95)	105
RECONCILIATION OF CASH, CASH EQUIVALENTS AND SHORT-TERM INVESTMENTS		
18. Net change in cash, cash equivalents and short-term investments (Line 11 plus Line 15 plus Line 17).....	11,077	409,787
19. Cash, cash equivalents and short-term investments:		
19.1 Beginning of year.....	433,284	23,497
19.2 End of period (Line 18 plus Line 19.1).....	444,361	433,284

Note: Supplemental disclosures of cash flow information for non-cash transactions:

20.0001		
---------------	--	--

NOTES TO FINANCIAL STATEMENTS

Note 1 - Summary of Significant Accounting Policies

No significant change.

Note 2 - Accounting Changes and Corrections of Errors

No significant change.

Note 3 - Business Combinations and Goodwill

No significant change.

Note 4 - Discontinued Operations

No significant change.

Note 5 - Investments

No significant change.

Note 6 - Joint Ventures, Partnerships and Limited Liability Companies

No significant change.

Note 7 - Investment Income

No significant change.

Note 8 - Derivative Instruments

No significant change.

Note 9 - Income Taxes

No significant change.

Note 10 - Information Concerning Parent, Subsidiaries and Affiliates

No significant change.

Note 11 - Debt

No significant change.

Note 12 - Retirement Plans, Deferred Compensation, Postemployment Benefits and Compensated Absences and Other Postretirement Benefit Plans

No significant change.

Note 13 - Capital and Surplus, Shareholders' Dividend Restrictions and Quasi-Reorganizations

No significant change.

Note 14 - Contingencies

No significant change.

Note 15 - Leases

No significant change.

NOTES TO FINANCIAL STATEMENTS

Note 16 - Information About Financial Instruments With Off-Balance Sheet Risk and Financial Instruments With Concentrations of Credit Risk

No significant change.

Note 17 - Sale, Transfer and Servicing of Financial Assets and Extinguishments of Liabilities

No significant change.

Note 18 - Gain or Loss to the Reporting Entity from Uninsured Plans and the Uninsured Portion of Partially Insured Plans

No significant change.

Note 19 - Direct Premium Written/Produced by Managing General Agents/Third Party Administrators

No significant change.

Note 20 - September 11 Events

No significant change.

Note 21 - Other Items

No significant change.

Note 22 - Events Subsequent

No significant change.

Note 23 - Reinsurance

No significant change.

Note 24 - Retrospectively Rated Contracts & Contracts Subject to Redetermination

No significant change.

Note 25 - Change in Incurred Losses and Loss Adjustment Expenses

No significant change.

Note 26 - Intercompany Pooling Arrangements

No significant change.

Note 27 - Structured Settlements

No significant change.

Note 28 - Health Care Receivables

No significant change.

Note 29 - Participating Policies

No significant change.

Note 30 - Premium Deficiency Reserves

No significant change.

NOTES TO FINANCIAL STATEMENTS

Note 31 - High Deductibles

No significant change.

Note 32 - Discounting of Liabilities for Unpaid Losses or Unpaid Loss Adjustment Expenses

No significant change.

Note 33 - Asbestos/Environmental Reserves

No significant change.

Note 34 - Subscriber Savings Accounts

No significant change.

Note 35 - Multiple Peril Crop Insurance

No significant change.

GENERAL INTERROGATORIES

(Responses to these interrogatories should be based on changes that have occurred since prior year end unless otherwise noted)

PART 1 - COMMON INTERROGATORIES

GENERAL

- 1.1 Did the reporting entity experience any material transactions requiring the filing of Disclosure of Material Transactions with the State of Domicile, as required by the Model Act? Yes No
- 1.2 If yes, has the report been filed with the domiciliary state? Yes No
- 2.1 Has any change been made during the year of this statement in the charter, by-laws, articles of incorporation, or deed of settlement of the reporting entity? Yes No
- 2.2 If yes, date of change: 06/16/2006.....
- 3. Have there been any substantial changes in the organizational chart since the prior quarter end? Yes No
If yes, complete the Schedule Y-Part 1 - Organizational chart.
- 4.1 Has the reporting entity been a party to a merger or consolidation during the period covered by this statement? Yes No
- 4.2 If yes, provide name of entity, NAIC Company Code, and state of domicile (use two letter state abbreviation) for any entity that has ceased to exist as a result of the merger or consolidation.

1 Name of Entity	2 NAIC Company Code	3 State of Domicile

- 5. If the reporting entity is subject to a management agreement, including third-party administrator(s), managing general agent(s), attorney-in-fact, or similar agreement, have there been any significant changes regarding the terms of the agreement or principals involved? Yes No N/A
If yes, attach an explanation.

- 6.1 State as of what date the latest financial examination of the reporting entity was made or is being made. 12/31/2004.....
- 6.2 State the as of date that the latest financial examination report became available from either the state of domicile or the reporting entity. This date should be the date of the examined balance sheet and not the date the report was completed or released. 12/31/2004.....
- 6.3 State as of what date the latest financial examination report became available to other states or the public from either the state of domicile or the reporting entity. This is the release date or completion date of the examination report and not the date of the examination (balance sheet date). 08/09/2006.....
- 6.4 By what department or departments?
INDIANA DEPARTMENT OF INSURANCE

- 7.1 Has this reporting entity had any Certificates of Authority, licenses or registrations (including corporate registration, if applicable) suspended or revoked by any governmental entity during the reporting period? Yes No
- 7.2 If yes, give full information:

- 8.1 Is the company a subsidiary of a bank holding company regulated by the Federal Reserve Board? Yes No
- 8.2 If response to 8.1 is yes, please identify the name of the bank holding company.

- 8.3 Is the company affiliated with one or more banks, thrifts or securities firms? Yes No
- 8.4 If the response to 8.3 is yes, please provide below the names and location (city and state of the main office) of any affiliates regulated by a federal regulatory services agency [i.e. the Federal Reserve Board (FRB), the Office of the Comptroller of the Currency (OCC), the Office of Thrift Supervision (OTS), the Federal Deposit Insurance Corporation (FDIC) and the Securities Exchange Commission (SEC)] and identify the affiliate's primary federal regulator].

1 Affiliate Name	2 Location (City, State)	3 FRB	4 OCC	5 OTS	6 FDIC	7 SEC

FINANCIAL

- 9.1 Does the reporting entity report any amounts due from parent, subsidiaries or affiliates on Page 2 of this statement? Yes No
- 9.2 If yes, indicate any amounts receivable from parent included in the Page 2 amount.

INVESTMENT

- 10.1 Has there been any change in the reporting entity's own preferred or common stock? Yes No
- 10.2 If yes, explain:.....

- 11.1 Were any of the stocks, bonds, or other assets of the reporting entity loaned, placed under option agreement, or otherwise made available for use by another person? (Exclude securities under securities lending agreements.) Yes No
- 11.2 If yes, give full and complete information relating thereto:

- 12. Amount of real estate and mortgages held in other invested assets in Schedule BA: \$.....0
- 13. Amount of real estate and mortgages held in short-term investments: \$.....0
- 14.1 Does the reporting entity have any investments in parent, subsidiaries and affiliates? Yes No

AMERICAN MEDICAL INSURANCE EXCHANGE GENERAL INTERROGATORIES

(Responses to these interrogatories should be based on changes that have occurred since prior year end unless otherwise noted)

PART 1 - COMMON INTERROGATORIES

14.2 If yes, please complete the following:

		1 Prior Year-End Book/Adjusted Carrying Value	2 Current Quarter Statement Value
14.21	Bonds.....	\$.....0	\$.....0
14.22	Preferred Stock.....	\$.....0	\$.....0
14.23	Common Stock.....	\$.....0	\$.....0
14.24	Short-Term Investments.....	\$.....0	\$.....0
14.25	Mortgages, Loans or Real Estate.....	\$.....0	\$.....0
14.26	All Other.....	\$.....0	\$.....0
14.27	Total Investment in Parent, Subsidiaries and Affiliates (Subtotal Lines 14.21 to 14.26).....	\$.....0	\$.....0
14.28	Total Investment in Parent included in Lines 14.21 to 14.26 above	\$.....0	\$.....0

15.1 Has the reporting entity entered into any hedging transactions reported on Schedule DB? Yes [] No [X]

15.2 If yes, has a comprehensive description of the hedging program been made available to the domiciliary state? Yes [] No []
If no, attach a description with this statement.

16. Excluding items in Schedule E, real estate, mortgage loans and investments held physically in the reporting entity's offices, vaults or safety deposit boxes, were all stocks, bonds and other securities, owned throughout the current year held pursuant to a custodial agreement with a qualified bank or trust company in accordance with Part 1-General, Section IV. H-Custodial or Safekeeping Agreements of the NAIC Financial Condition Examiners Handbook? Yes [X] No []

16.1 For all agreements that comply with the requirements of the NAIC Financial Condition Examiners Handbook, complete the following:

1 Name of Custodian(s)	2 Custodian Address
U.S. BANK	BIRMINGHAM, AL

16.2 For all agreements that do not comply with the requirements of the NAIC Financial Condition Examiners Handbook, provide the name, location and a complete explanation.

1 Name(s)	2 Location(s)	3 Complete Explanation(s)
NONE		

16.3 Have there been any changes, including name changes, in the custodian(s) identified in 16.1 during the current quarter? Yes [] No [X]

16.4 If yes, give full and complete information relating thereto:

1 Old Custodian	2 New Custodian	3 Date of Change	4 Reason

16.5 Identify all investment advisors, broker/dealers or individuals acting on behalf of broker/dealers that have access to the investment accounts, handle securities and have authority to make investments on behalf of the reporting entity:

1 Central Registration Depository	2 Name(s)	3 Address
NONE		

17.1 Have all the filing requirements of the Purposes and Procedures Manual of the NAIC Securities Valuation Office been followed? Yes [X] No []

17.2 If no, list exceptions: _____

**AMERICAN MEDICAL INSURANCE EXCHANGE
GENERAL INTERROGATORIES (continued)
PART 2
PROPERTY & CASUALTY INTERROGATORIES**

1. If the reporting entity is a member of a pooling arrangement, did the agreement or the reporting entity's participation change? Yes [] No [X] N/A []
If yes, attach an explanation.

2. Has the reporting entity reinsured any risk with any other reporting entity and agreed to release such entity from liability, in whole or in part, from any loss that may occur on the risk, or portion thereof, reinsured? Yes [] No [X]
If yes, attach an explanation.

3.1 Have any of the reporting entity's primary reinsurance contracts been canceled? Yes [] No [X]

3.2 If yes, give full and complete information thereto:

4.1 Are any of the liabilities for unpaid losses and loss adjustment expenses other than certain workers' compensation liabilities tabular reserves (see Annual Statement Instructions pertaining to disclosure of discounting for definition of "tabular reserves,") discounted at a rate of interest greater than zero? Yes [] No [X]

4.2 If yes, complete the following schedule:

1 Line of Business	2 Maximum Interest	3 Disc. Rate	Total Discount				Discount Taken During Period			
			4 Unpaid Losses	5 Unpaid LAE	6 IBNR	7 Total	8 Unpaid Losses	9 Unpaid LAE	10 IBNR	11 Total
XXX..XXX.....00000000
TotalXXX..XXX.....00000000

**AMERICAN MEDICAL INSURANCE EXCHANGE
SCHEDULE A - VERIFICATION**

Real Estate

	1 Year to Date	2 Prior Year Ended December 31
1. Book/adjusted carrying value, December 31 of prior year.....	0	
2. Increase (decrease) by adjustment.....		
3. Cost of acquired.....		
4. Cost of additions to and permanent improvements.....		
5. Total profit (loss) on sales.....		
6. Increase (decrease) by foreign exchange adjustment.....		
7. Amount received on sales.....		
8. Book/adjusted carrying value at end of current period.....	0	0
9. Total valuation allowance.....		
10. Subtotal (Lines 8 plus 9).....	0	0
11. Total nonadmitted amounts.....		
12. Statement value, current period (Page 2, real estate lines, net admitted assets column).....	0	0

SCHEDULE B - VERIFICATION

Mortgage Loans

	1 Year to Date	2 Prior Year Ended December 31
1. Book value/recorded investment excluding accrued interest on mortgages owned, December 31 of prior year.....	0	
2. Amount loaned during period:		
2.1 Actual cost at time of acquisitions.....		
2.2 Additional investment made after acquisitions.....		
3. Accrual of discount and mortgage interest points and commitment fees.....		
4. Increase (decrease) by adjustment.....		
5. Total profit (loss) on sale.....		
6. Amounts paid on account or in full during the period.....		
7. Amortization of premium.....		
8. Increase (decrease) by foreign exchange adjustment.....		
9. Book value/recorded investment excluding accrued interest on mortgages owned at end of current period.....	0	0
10. Total valuation allowance.....		
11. Subtotal (Lines 9 plus 10).....	0	0
12. Total nonadmitted amounts.....		
13. Statement value of mortgages owned at end of current period (Page 2, mortgage lines, net admitted assets column).....	0	0

SCHEDULE BA - VERIFICATION

Other Invested Assets

	1 Year to Date	2 Prior Year Ended December 31
1. Book/adjusted carrying value of long-term invested assets owned, December 31 of prior year.....	0	
2. Cost of acquisitions during period:		
2.1 Actual cost at time of acquisitions.....		
2.2 Additional investment made after acquisitions.....		
3. Accrual of discount.....		
4. Increase (decrease) by adjustment.....		
5. Total profit (loss) on sale.....		
6. Amounts paid on account or in full during the period.....		
7. Amortization of premium.....		
8. Increase (decrease) by foreign exchange adjustment.....		
9. Book adjusted/carrying value of long-term invested assets at end of current period.....	0	0
10. Total valuation allowance.....		
11. Subtotal (Lines 9 plus 10).....	0	0
12. Total nonadmitted amounts.....		
13. Statement value of long-term invested assets at end of current period (Page 2, Line 7, Column 3).....	0	0

SCHEDULE D - VERIFICATION

Bonds and Stocks

	1 Year to Date	2 Prior Year Ended December 31
1. Book/adjusted carrying value of bonds and stocks, December 31 of prior year.....	99,956	498,941
2. Cost of bonds and stocks acquired.....	101,000	
3. Accrual of discount.....	.44	1,015
4. Increase (decrease) by adjustment.....		
5. Increase (decrease) by foreign exchange adjustment.....		
6. Total profit (loss) on disposal.....		
7. Consideration for bonds and stocks disposed of.....	100,000	400,000
8. Amortization of premium.....	.62	
9. Book/adjusted carrying value, current period.....	100,938	99,956
10. Total valuation allowance.....		
11. Subtotal (Lines 9 plus 10).....	100,938	99,956
12. Total nonadmitted amounts.....		
13. Statement value.....	100,938	99,956

SCHEDULE D - PART 1B

Showing the Acquisitions, Dispositions and Non-Trading Activity
During the Current Quarter for all Bonds and Preferred Stock by Rating Class

	1	2	3	4	5	6	7	8
	Book/Adjusted Carrying Value Beginning of Current Quarter	Acquisitions During Current Quarter	Dispositions During Current Quarter	Non-Trading Activity During Current Quarter	Book/Adjusted Carrying Value End of First Quarter	Book/Adjusted Carrying Value End of Second Quarter	Book/Adjusted Carrying Value End of Third Quarter	Book/Adjusted Carrying Value December 31 Prior Year
BONDS								
1. Class 1.....	538,261	268,084	266,942	4,929	536,232	538,261	544,333	532,645
2. Class 2.....								
3. Class 3.....								
4. Class 4.....								
5. Class 5.....								
6. Class 6.....								
7. Total Bonds.....	538,261	268,084	266,942	4,929	536,232	538,261	544,333	532,645
PREFERRED STOCK								
8. Class 1.....								
9. Class 2.....								
10. Class 3.....								
11. Class 4.....								
12. Class 5.....								
13. Class 6.....								
14. Total Preferred Stock.....	0	0	0	0	0	0	0	0
15. Total Bonds and Preferred Stock.....	538,261	268,084	266,942	4,929	536,232	538,261	544,333	532,645

SCHEDULE DA - PART 1

Short-Term Investments Owned End of Current Quarter

	1 Book/Adjusted Carrying Value	2 Par Value	3 Actual Cost	4 Interest Collected Year To Date	5 Paid for Accrued Interest Year To Date
8299999. Totals.....	443,395	XXX	438,485		

SCHEDULE DA - PART 2 - Verification

Short-Term Investments Owned

	1 Year to Date	2 Prior Year Ended December 31
1. Book/adjusted carrying value, December 31 of prior year.....	432,689	23,354
2. Cost of short-term investments acquired.....	2,784,362	2,334,394
3. Increase (decrease) by adjustment.....	5,724	
4. Increase (decrease) by foreign exchange adjustment.....		
5. Total profit (loss) on disposal of short-term investments.....	(10)	
6. Consideration received on disposal of short-term investments.....	2,779,369	1,925,059
7. Book/adjusted carrying value, current period.....	443,395	432,689
8. Total valuation allowance.....		
9. Subtotal (Lines 7 plus 8).....	443,395	432,689
10. Total nonadmitted amounts.....		
11. Statement value (Lines 9 minus 10).....	443,395	432,689
12. Income collected during period.....	16,747	3,588
13. Income earned during period.....	15,548	4,932

**Sch. DB-Part F-Section 1
NONE**

**Sch. DB-Part F-Section 2
NONE**

**Sch. F
NONE**

AMERICAN MEDICAL INSURANCE EXCHANGE

SCHEDULE T - EXHIBIT OF PREMIUMS WRITTEN

Current Year to Date - Allocated by States and Territories

States, Etc.	1 Is Insurer Licensed? (Yes or No)	Direct Premiums Written		Direct Losses Paid (Deducting Salvage)		Direct Losses Unpaid	
		2 Current Year to Date	3 Prior Year to Date	4 Current Year to Date	5 Prior Year to Date	6 Current Year to Date	7 Prior Year to Date
1. Alabama.....AL	NO						
2. Alaska.....AK	NO						
3. Arizona.....AZ	NO						
4. Arkansas.....AR	NO						
5. California.....CA	NO						
6. Colorado.....CO	NO						
7. Connecticut.....CT	NO						
8. Delaware.....DE	NO						
9. District of Columbia.....DC	NO						
10. Florida.....FL	NO						
11. Georgia.....GA	NO						
12. Hawaii.....HI	NO						
13. Idaho.....ID	NO						
14. Illinois.....IL	NO						
15. Indiana.....IN	YES		0		0		0
16. Iowa.....IA	NO						
17. Kansas.....KS	NO						
18. Kentucky.....KY	NO						
19. Louisiana.....LA	NO						
20. Maine.....ME	NO						
21. Maryland.....MD	NO						
22. Massachusetts.....MA	NO						
23. Michigan.....MI	NO						
24. Minnesota.....MN	NO						
25. Mississippi.....MS	NO						
26. Missouri.....MO	NO						
27. Montana.....MT	NO						
28. Nebraska.....NE	NO						
29. Nevada.....NV	NO						
30. New Hampshire.....NH	NO						
31. New Jersey.....NJ	NO						
32. New Mexico.....NM	NO						
33. New York.....NY	NO						
34. North Carolina.....NC	NO						
35. North Dakota.....ND	NO						
36. Ohio.....OH	NO						
37. Oklahoma.....OK	NO						
38. Oregon.....OR	NO						
39. Pennsylvania.....PA	NO						
40. Rhode Island.....RI	NO						
41. South Carolina.....SC	NO						
42. South Dakota.....SD	NO						
43. Tennessee.....TN	NO						
44. Texas.....TX	NO						
45. Utah.....UT	NO						
46. Vermont.....VT	NO						
47. Virginia.....VA	NO						
48. Washington.....WA	NO						
49. West Virginia.....WV	NO						
50. Wisconsin.....WI	NO						
51. Wyoming.....WY	NO						
52. American Samoa.....AS	NO						
53. Guam.....GU	NO						
54. Puerto Rico.....PR	NO						
55. US Virgin Islands.....VI	NO						
56. Northern Mariana Islands.....MP	NO						
57. Canada.....CN	NO						
58. Aggregate Other Alien.....OT	XXX	0	0	0	0	0	0
59. Totals.....(a) 1		0	0	0	0	0	0

DETAILS OF WRITE-INS

5801.....	XXX						
5802.....	XXX						
5803.....	XXX						
5898. Summary of remaining write-ins for Line 58 from overflow page.....	XXX	0	0	0	0	0	0
5899. Totals (Lines 5801 thru 5803 + Line 5898) (Line 58 above).....	XXX	0	0	0	0	0	0

(a) Insert the number of yes responses except for Canada and Other Alien.

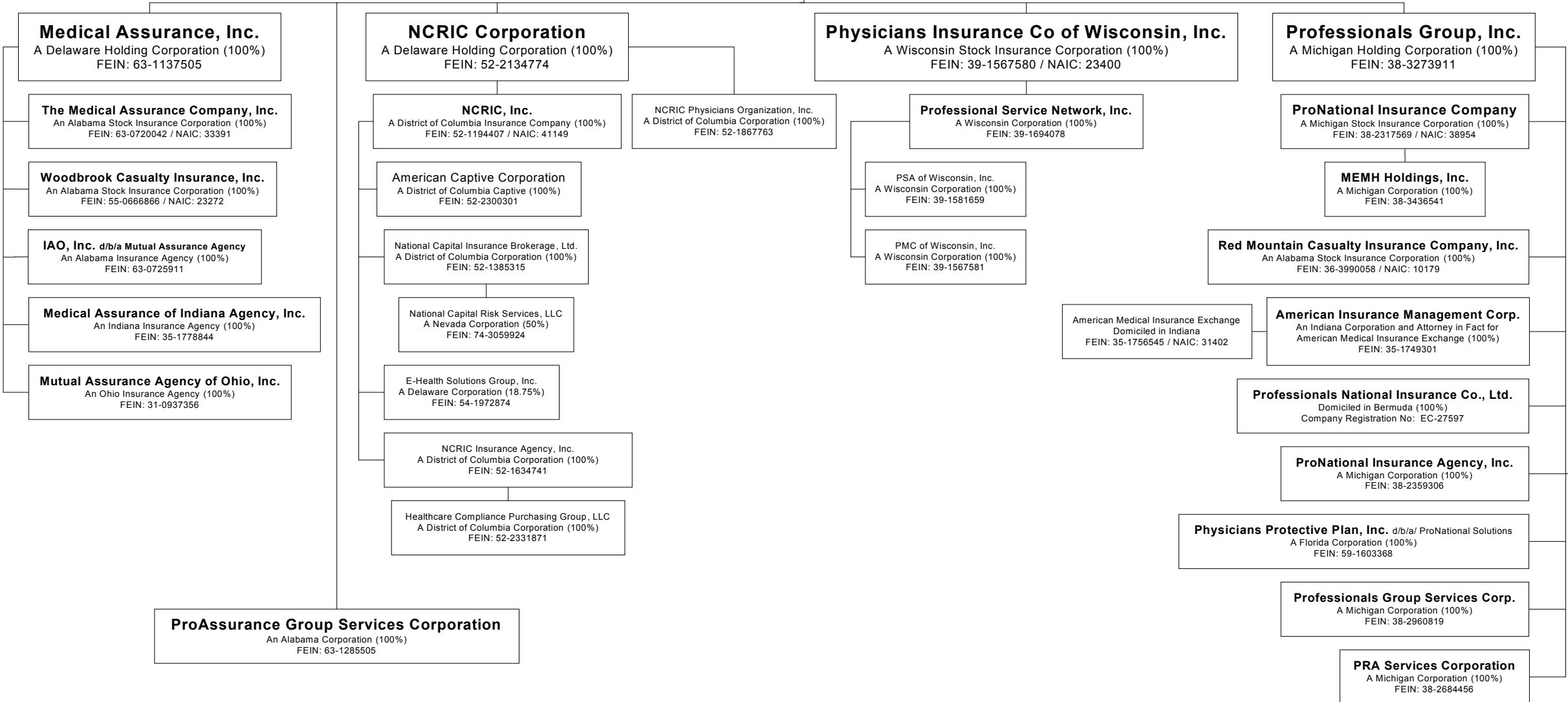
SCHEDULE Y – INFORMATION CONCERNING ACTIVITIES OF INSURER MEMBERS OF A HOLDING COMPANY GROUP

PART 1 – ORGANIZATIONAL CHART

16

ProAssurance Corporation

A Delaware Holding Corporation / FEIN: 63-1261433



AMERICAN MEDICAL INSURANCE EXCHANGE PART 1 - LOSS EXPERIENCE

Lines of Business	Current Year to Date			4 Prior Year to Date Direct Loss Percentage
	1 Direct Premiums Earned	2 Direct Losses Incurred	3 Direct Loss Percentage	
1. Fire.....			0.0	
2. Allied lines.....			0.0	
3. Farmowners multiple peril.....			0.0	
4. Homeowners multiple peril.....			0.0	
5. Commercial multiple peril.....			0.0	
6. Mortgage guaranty.....			0.0	
8. Ocean marine.....			0.0	
9. Inland marine.....			0.0	
10. Financial guaranty.....			0.0	
11.1. Medical malpractice-occurrence.....			0.0	
11.2. Medical malpractice-claims made.....			0.0	
12. Earthquake.....			0.0	
13. Group accident and health.....			0.0	
14. Credit accident and health.....			0.0	
15. Other accident and health.....			0.0	
16. Workers' compensation.....			0.0	
17.1. Other liability-occurrence.....			0.0	
17.2. Other liability-claims made.....			0.0	
18.1. Products liability-occurrence.....			0.0	
18.2. Products liability-claims made.....			0.0	
19.1, 19.2 Private passenger auto liability.....			0.0	
19.3, 19.4 Commercial auto liability.....			0.0	
21. Auto physical damage.....			0.0	
22. Aircraft (all perils).....			0.0	
23. Fidelity.....			0.0	
24. Surety.....			0.0	
26. Burglary and theft.....			0.0	
27. Boiler and machinery.....			0.0	
28. Credit.....			0.0	
29. International.....			0.0	
30. Reinsurance-nonproportional assumed property.....	XXX	XXX	XXX	XXX
31. Reinsurance-nonproportional assumed liability.....	XXX	XXX	XXX	XXX
32. Reinsurance-nonproportional assumed financial lines.....	XXX	XXX	XXX	XXX
33. Aggregate write-ins for other lines of business.....	0	0	0.0	
34. Totals.....	0	0	0.0	

NONE

DETAILS OF WRITE-INS

3301.			0.0	
3302.			0.0	
3303.			0.0	
3398. Sum. of remaining write-ins for Line 33 from overflow page.....	0	0	0.0	XXX
3399. Totals (Lines 3301 thru 3303 plus 3398) (Line 33).....	0	0	0.0	

PART 2 - DIRECT PREMIUMS WRITTEN

	1	2	3
	Current Quarter	Current Year to Date	Prior Year Year to Date
1. Fire.....			
2. Allied lines.....			
3. Farmowners multiple peril.....			
4. Homeowners multiple peril.....			
5. Commercial multiple peril.....			
6. Mortgage guaranty.....			
8. Ocean marine.....			
9. Inland marine.....			
10. Financial guaranty.....			
11.1. Medical malpractice-occurrence.....			
11.2. Medical malpractice-claims made.....			
12. Earthquake.....			
13. Group accident and health.....			
14. Credit accident and health.....			
15. Other accident and health.....			
16. Workers' compensation.....			
17.1. Other liability-occurrence.....			
17.2. Other liability-claims made.....			
18.1. Products liability-occurrence.....			
18.2. Products liability-claims made.....			
19.1, 19.2 Private passenger auto liability.....			
19.3, 19.4 Commercial auto liability.....			
21. Auto physical damage.....			
22. Aircraft (all perils).....			
23. Fidelity.....			
24. Surety.....			
26. Burglary and theft.....			
27. Boiler and machinery.....			
28. Credit.....			
29. International.....			
30. Reinsurance-nonproportional assumed property.....	XXX	XXX	XXX
31. Reinsurance-nonproportional assumed liability.....	XXX	XXX	XXX
32. Reinsurance-nonproportional assumed financial lines.....	XXX	XXX	XXX
33. Aggregate write-ins for other lines of business.....	0	0	0
34. Totals.....	0	0	0

NONE

DETAILS OF WRITE-INS

3301.			
3302.			
3303.			
3398. Sum. of remaining write-ins for Line 33 from overflow page.....	0	0	0
3399. Totals (Lines 3301 thru 3303 plus 3398) (Line 33).....	0	0	0

PART 3 (000 omitted)

LOSS AND LOSS ADJUSTMENT EXPENSE RESERVES SCHEDULE

	1	2	3	4	5	6	7	8	9	10	11	12	13
Years in Which Losses Occurred	Prior Year-End Known Case Loss and LAE Reserves	Prior Year-End IBNR Loss and LAE Reserves	Total Prior Year-End Loss and LAE Reserves (Cols. 1 + 2)	2006 Loss and LAE Payments on Claims Reported as of Prior Year-End	2006 Loss and LAE Payments on Claims Unreported as of Prior Year-End	Total 2006 Loss and LAE Payments (Cols. 4 + 5)	Q.S. Date Known Case Loss and LAE Reserves on Claims Reported and Open as of Prior Year-End	Q.S. Date Known Case Loss and LAE Reserves on Claims Reported or Reopened Subsequent to Prior Year-End	Q.S. Date IBNR Loss and LAE Reserves	Total Q.S. Loss and LAE Reserves (Cols. 7 + 8 + 9)	Prior Year-End Known Case Loss and LAE Reserves Developed (Savings)/Deficiency (Cols. 4 + 7 minus Col. 1)	Prior Year-End IBNR Loss and LAE Reserves Developed (Savings)/Deficiency (Cols. 5 + 8 + 9 minus Col. 2)	Prior Year-End Total Loss and LAE Reserve Developed (Savings)/Deficiency (Cols. 11 + 12)
1. 2003 + Prior		0		0			0000
2. 2004		0		0			0000
3. Subtotals 2004 + Prior0000000000000
4. 2005		0		0			0000
5. Subtotals 2005 + Prior0000000000000
6. 2006XXXXXXXXXXXX	0XXX		0XXXXXXXXX
7. Totals0000000000000
8. Prior Year-End's Surplus As Regards Policyholders534										Col. 11, Line 7 As % of Col. 1, Line 7	Col. 12, Line 7 As % of Col. 2, Line 7	Col. 13, Line 7 As % of Col. 3, Line 7
											1.0.0 %	2.0.0 %	3.0.0 %
													Col. 13, Line 7 Line 8
													4.0.0 %

AMERICAN MEDICAL INSURANCE EXCHANGE SUPPLEMENTAL EXHIBITS AND SCHEDULES INTERROGATORIES

The following supplemental reports are required to be filed as part of your statement filing. However, in the event that your company does not transact the type of business for which the special report must be filed, your response of NO to the specific interrogatory will be accepted in lieu of filing a "NONE" report and a bar code will be printed below. If the supplement is required of your company but is not being filed for whatever reason, enter SEE EXPLANATION and provide an explanation following the interrogatory questions.

	Response
1. Will the Trusteed Surplus Statement be filed with the state of domicile and the NAIC with this statement?	<u>NO</u>
2. Will Supplement A to Schedule T (Medical Malpractice Supplement) be filed with this statement?	<u>YES</u>

Explanation:

Bar Code:



**Overflow Page
NONE**

**Sch. A-Part 2
NONE**

**Sch. A-Part 3
NONE**

**Sch. B-Part 1
NONE**

**Sch. B-Part 2
NONE**

**Sch. BA-Part 1
NONE**

**Sch. BA-Part 2
NONE**

SCHEDULE D - PART 3

Show all Long-Term Bonds and Stock Acquired by the Company During the Current Quarter

1 CUSIP Identification	2 Description	3 Foreign	4 Date Acquired	5 Name of Vendor	6 Number of Shares of Stock	7 Actual Cost	8 Par Value	9 Paid for Accrued Interest and Dividends	10 NAIC Designation or Market Indicator (a)
Bonds - U.S. Government									
912827 4F 6	US TREASURY N/B 05/15/2008 5.625		08/14/2006	MERRILL LYNCH		101,000	100,000	1,406	1
0399999	Total - Bonds - U.S. Government					101,000	100,000	1,406	XXX
6099997	Total - Bonds - Part 3					101,000	100,000	1,406	XXX
6099999	Total - Bonds					101,000	100,000	1,406	XXX
7499999	Total - Bonds, Preferred and Common Stocks					101,000	XXX	1,406	XXX

(a) For all common stock bearing the NAIC market indicator "U" provide: the number of such issues:.....0.

SCHEDULE D - PART 4

Show All Long-Term Bonds and Stock Sold, Redeemed or Otherwise Disposed of by the Company During the Current Quarter

1 CUSIP Identification	2 Description	3 F o r e i g n	4 Disposal Date	5 Name of Purchaser	6 Number of Shares of Stock	7 Consideration	8 Par Value	9 Actual Cost	10 Prior Year Book/ Adjusted Carrying Value	Change in Book/Adjusted Carrying Value					16 Book/ Adjusted Carrying Value At Disposal Date	17 Foreign Exchange Gain (Loss) on Disposal	18 Realized Gain (Loss) on Disposal	19 Total Gain (Loss) on Disposal	20 Bond Interest/ Stock Dividends Received During Year	21 Maturity Date	22 NAIC Desig- nation or Market Indicator (a)
										11 Unrealized Valuation Increase/ (Decrease)	12 Current Year's (Amortization)/ Accretion	13 Current Year's Other Than Temporary Impairment Recognized	14 Total Change in B./A.C.V. (11+12-13)	15 Total Foreign Exchange Change in B./A.C.V.							
Bonds - U.S. Government																					
912828 BF 6	US TREASURY N/B		2.375.....	08/15/2006	MATURITY.....	100,000	100,000	99,797	99,956		44		44		100,000			0	2,375	08/15/2006	1.....
0399999.	Total - Bonds - U.S. Government.....					100,000	100,000	99,797	99,956	0	44	0	44	0	100,000	0	0	0	2,375	XXX.....	XXX.....
6099997.	Total - Bonds - Part 4.....					100,000	100,000	99,797	99,956	0	44	0	44	0	100,000	0	0	0	2,375	XXX.....	XXX.....
6099999.	Total - Bonds.....					100,000	100,000	99,797	99,956	0	44	0	44	0	100,000	0	0	0	2,375	XXX.....	XXX.....
7499999.	Total - Bonds, Preferred and Common Stocks.....					100,000	XXX.....	99,797	99,956	0	44	0	44	0	100,000	0	0	0	2,375	XXX.....	XXX.....

(a) For all common stock bearing the NAIC market indicator "U" provide: the number of such issues:.....0.

**Sch. DB-Part A-Section 1
NONE**

**Sch. DB-Part B-Section 1
NONE**

**Sch. DB-Part C-Section 1
NONE**

**Sch. DB-Part D-Section 1
NONE**

AMERICAN MEDICAL INSURANCE EXCHANGE

SCHEDULE E - PART 1 - CASH

Month End Depository Balances

1 Depository	2 Code	3 Rate of Interest	4 Amount of Interest Received During Current Quarter	5 Amount of Interest Accrued at Current Statement Date	Book Balance at End of Each Month During Current Quarter			9 *
					6 First Month	7 Second Month	8 Third Month	
Open Depositories								
WACHOVIA BANK - OPERATING ACCT..... BIRMINGHAM, AL.....					1,011	985	965	XXX
US BANK - TRUST CASH..... BIRMINGHAM, AL.....								XXX
0199999. Total Open Depositories.....	XXX	XXX	0	0	1,011	985	965	XXX
0399999. Total Cash on Deposit.....	XXX	XXX	0	0	1,011	985	965	XXX
0599999. Total Cash.....	XXX	XXX	0	0	1,011	985	965	XXX

SCHEDULE E - PART 2 - CASH EQUIVALENTS

Show Investments Owned at End of Current Quarter

1 CUSIP Identification	2 Description	3 Code	4 Date Acquired	5 Rate of Interest	6 Maturity Date	7 Book/Adjusted Carrying Value	8 Amount of Interest Due & Accrued	9 Gross Investment Income
------------------------------	------------------	-----------	-----------------------	--------------------------	-----------------------	--------------------------------------	--	---------------------------------

NONE